

For Research Use Only

CoraLite® Plus 405 Anti-Human CD41a (HIP8)

Catalog Number: CL405-65173



Basic Information

Catalog Number:

CL405-65173

Size:

100 tests, 5 ul/test

Source:

Mouse

Isotype:

IgG1, kappa

GenBank Accession Number:

BC117443

GeneID (NCBI):

3674

UNIPROT ID:

P08514

Full Name:

integrin, alpha 2b (platelet glycoprotein IIb of IIb/IIIa complex, antigen CD41)

Purification Method:

Unknown

CloneNo.:

HIP8

Excitation/Emission maxima wavelengths:

399 nm / 422 nm

Applications

Tested Applications:

FC

Species Specificity:

human, non-human primates

Background Information

The integrins are a superfamily of cell adhesion receptors that bind to extracellular matrix ligands, cell-surface ligands, and soluble ligands (PMID: 17543136). They are transmembrane $\alpha\beta$ heterodimers and at least 24 distinct integrin heterodimers are formed by the combination of 18 α and eight β known subunits (PMID: 17543136; 20029421). In addition to mediating cell adhesion, integrins also play important roles in modulating signal transduction pathways that control cellular responses including migration, proliferation, differentiation, and apoptosis (PMID: 19118207). Integrin alpha-IIb (ITGA2B, CD41) is expressed on platelets, megakaryocytes and some hematopoietic progenitor cells (PMID: 11934866).

Storage

Storage:

Store at 2-8°C. Avoid exposure to light. Stable for one year after shipment.

Storage Buffer:

PBS with 0.09% sodium azide and 0.5% BSA, pH7.3

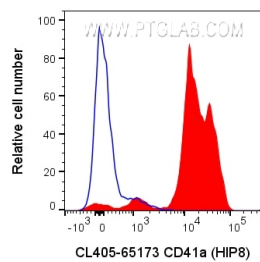
For technical support and original validation data for this product please contact:

T: 1 (888) 4PTGLAB (1-888-478-4522) (toll free in USA), or 1(312) 455-8498 (outside USA)

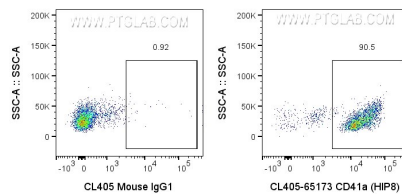
E: proteintech@ptglab.com
W: ptglab.com

This product is exclusively available under Proteintech Group brand and is not available to purchase from any other manufacturer.

Selected Validation Data



100 ul human platelet-rich plasma (diluted 1:2 with PBS) was surface stained with 5 ul CoraLite® Plus 405 Anti-Human CD41a (CL405-65173, Clone:HIP8) or CoraLite® Plus 405 Mouse IgG1 Isotype Control (CL405-65124). Cells were not fixed.



100 ul human platelet-rich plasma (diluted 1:2 with PBS) was surface stained with 5 ul CoraLite® Plus 405 Anti-Human CD41a (CL405-65173, Clone:HIP8) or CoraLite® Plus 405 Mouse IgG1 Isotype Control (CL405-65124). Cells were not fixed.