

For Research Use Only

# CoraLite® Plus 405 Anti-Human CD146 (P1H12)



Catalog Number: **CL405-65181**

## Basic Information

<b>Catalog Number:</b> CL405-65181	<b>GenBank Accession Number:</b> BC056418	<b>Purification Method:</b> Affinity purification
<b>Size:</b> 100tests , 5 µl/test	<b>GeneID (NCBI):</b> 4162	<b>CloneNo.:</b> P1H12
<b>Source:</b> Mouse	<b>Full Name:</b> melanoma cell adhesion molecule	<b>Excitation/Emission maxima wavelengths:</b> 399 nm / 422 nm
<b>Isotype:</b> IgG1, kappa	<b>Calculated MW:</b> 646 aa, 72 kDa	

## Applications

**Tested Applications:**  
FC

**Species Specificity:**  
Rabbit, Canine, Mouse, Human

## Background Information

### Storage

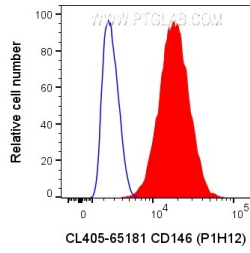
**Storage:**  
Store at 2-8°C. Avoid exposure to light. Stable for one year after shipment.

**Storage Buffer:**  
PBS with 0.09% sodium azide and 0.5% BSA.

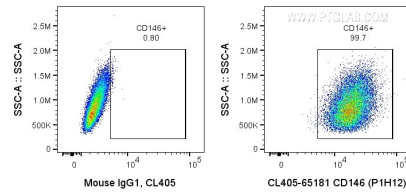
For technical support and original validation data for this product please contact:  
T: 1 (888) 4PTGLAB (1-888-478-4522) (toll free in USA), or 1(312) 455-8498 (outside USA)      E: [proteintech@ptglab.com](mailto:proteintech@ptglab.com)  
W: [ptglab.com](http://ptglab.com)

This product is exclusively available under Proteintech Group brand and is not available to purchase from any other manufacturer.

## Selected Validation Data



1X10<sup>6</sup> A375 cells were surface stained with 5 ul CoraLite® Plus 405 Anti-Human CD146 (CL405-65181, Clone:P1H12), or Mouse IgG1 Isotype Control. Cells were not fixed.



1X10<sup>6</sup> A375 cells were surface stained with 5 ul CoraLite® Plus 405 Anti-Human CD146 (CL405-65181, Clone:P1H12), or Mouse IgG1 Isotype Control. Cells were not fixed.