

For Research Use Only

CoraLite® Plus 405 Anti-Human ALCAM (3A6)



Catalog Number: CL405-65223

Basic Information

Catalog Number: CL405-65223	GenBank Accession Number: BC057809	Purification Method: Affinity purification
Size: 100tests , 5 µl/test	GeneID (NCBI): 214	CloneNo.: 3A6
Source: Mouse	Full Name: activated leukocyte cell adhesion molecule	Excitation/Emission maxima wavelengths: 399 nm / 422 nm
Isotype: IgG1, kappa	Calculated MW: 105 kDa	

Applications

Tested Applications:
FC

Species Specificity:
Human

Background Information

Activated leukocyte cell adhesion molecule (ALCAM, also known as CD166) is a cell adhesion molecule that belongs to the immunoglobulin superfamily. It is involved in cell-cell adhesion through homophilic and heterophilic (to CD6) interactions. ALCAM is widely expressed in a variety of normal tissues and cell types, including activated T cells and monocytes, epithelial cells, fibroblasts, neuronal cells, hepatocytes, and bone marrow mesenchymal stem cells (PMID: 7760007; 25221999). Altered ALCAM expression has been associated with the differentiation state and progression in some neoplasms including melanoma, prostate, colorectal, and breast cancers (PMID: 20461761; 18172759).

Storage

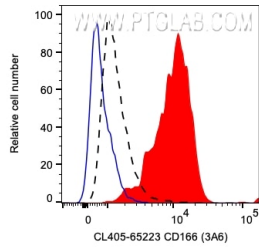
Storage:
Store at 2-8°C. Avoid exposure to light. Stable for one year after shipment.

Storage Buffer:
PBS with 0.09% sodium azide and 0.5% BSA.

For technical support and original validation data for this product please contact:
T: 1 (888) 4PTGLAB (1-888-478-4522) (toll free in USA), or 1(312) 455-8498 (outside USA) E: proteintech@ptglab.com W: ptglab.com

This product is exclusively available under Proteintech Group brand and is not available to purchase from any other manufacturer.

Selected Validation Data



1×10^6 PHA-treated (day 3) human PBMCs were surface stained with 5 μ l CoraLite® Plus 405 Anti-Human ALCAM (CL405-65223, Clone:3A6) (red), or unstained (blue). The black dashed line indicates unactivated PBMCs surface stained with 5 μ l CoraLite® Plus 405 Anti-Human ALCAM. Cells were not fixed. Monocytes were gated.