

For Research Use Only

# CoraLite® Plus 405 Anti-Human LRP1 (5A6)



Catalog Number: CL405-65233

## Basic Information

|                                       |   |   |
|---------------------------------------|---|---|
| <b>Catalog Number:</b><br>CL405-65233 | <b>GenBank Accession Number:</b><br>BC045107  | <b>Purification Method:</b><br>N/A                                |
| <b>Size:</b><br>100tests , 5 µl/test  | <b>GeneID (NCBI):</b><br>4035   | <b>CloneNo.:</b><br>5A6   |
| <b>Source:</b><br>Mouse               | <b>UNIPROT ID:</b><br>Q07954  | <b>Excitation/Emission maxima wavelengths:</b><br>399 nm / 422 nm |
| <b>Isotype:</b><br>IgG2b              | <b>Full Name:</b><br>low density lipoprotein-related protein 1 (alpha-2-macroglobulin receptor) |   |
|                                       | <b>Calculated MW:</b><br>505 kDa  |   |

## Applications

**Tested Applications:**  
FC

**Species Specificity:**  
human

## Background Information

LRP1 (Pro-low-density lipoprotein receptor-related protein 1), also known as A2MR, APOER and CD91, is a type I transmembrane protein that belongs to the LDLR family. LRP1 is synthesized as a transmembrane glycosylated precursor of 600 kDa, and is subsequently cleaved to generate a large 515-kDa N-terminal extracellular subunit and an 85-kDa C-terminal transmembrane subunit, which are noncovalently associated with one another (PMID: 2112085; 8546712). LRP1 is a multifunctional receptor involved in the clearance of a large number of diverse ligands and modulating various cellular processes. LRP1 is implicated in conditions such as atherosclerosis, cancer and neurodegenerative diseases (PMID: 28381441).

## Storage

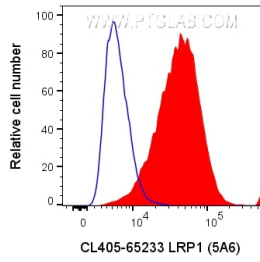
**Storage:**  
Store at 2-8°C. Avoid exposure to light. Stable for one year after shipment.

**Storage Buffer:**  
PBS with 0.09% sodium azide and 0.5% BSA.

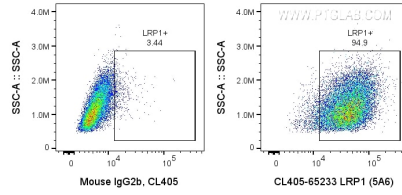
For technical support and original validation data for this product please contact:  
T: 1 (888) 4PTGLAB (1-888-478-4522) (toll free in USA), or 1(312) 455-8498 (outside USA)      E: proteintech@ptglab.com  
W: ptglab.com

This product is exclusively available under Proteintech Group brand and is not available to purchase from any other manufacturer.

## Selected Validation Data



1X10<sup>6</sup> U-87 MG cells were surface stained with 5 ul CoraLite® Plus 405 Anti-Human LRP1 (CL405-65233, Clone: 5A6), or Mouse IgG2b Isotype Control. Cells were not fixed.



1X10<sup>6</sup> U-87 MG cells were surface stained with 5 ul CoraLite® Plus 405 Anti-Human LRP1 (CL405-65233, Clone: 5A6), or Mouse IgG2b Isotype Control. Cells were not fixed.