

For Research Use Only

CoraLite® Plus 405 Anti-Human CD226 (11A8)



Catalog Number: **CL405-65247**

Basic Information

Catalog Number: CL405-65247	GenBank Accession Number: BC074787	Purification Method: N/A
Size: 100tests , 5 ul/test	GeneID (NCBI): 10666	CloneNo.: 11A8
Source: Mouse	Full Name: CD226 molecule	Excitation/Emission maxima wavelengths: 399 nm / 422 nm
Isotype: IgG1, kappa	Calculated MW: 336 aa, 39 kDa	

Applications

Tested Applications:
FC

Species Specificity:
Human

Background Information

CD226 (DNAM-1) is a ~65 kDa glycoprotein expressed on the surface of NK cells, platelets, monocytes and a subset of T cells. It is a member of the Ig-superfamily containing 2 Ig-like domains of the V-set. CD226 mediates cellular adhesion of platelets and megakaryocytic cells to vascular endothelial cells. The protein also plays a role in megakaryocytic cell maturation. Interactions of CD226 and its ligands, CD155 and CD112, induce NK and T cell-mediated cytotoxicity and cytokine secretion (PMID: 15039383).

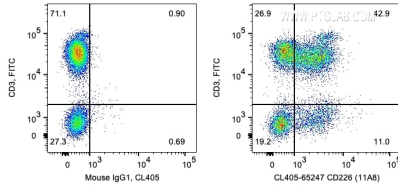
Storage

Storage:
Store at 2-8°C. Avoid exposure to light. Stable for one year after shipment.
Storage Buffer:
PBS with 0.09% sodium azide and 0.5% BSA.

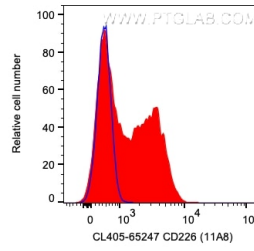
For technical support and original validation data for this product please contact:
T: 1 (888) 4PTGLAB (1-888-478-4522) (toll free in USA), or 1(312) 455-8498 (outside USA)
E: proteintech@ptglab.com
W: ptglab.com

This product is exclusively available under Proteintech Group brand and is not available to purchase from any other manufacturer.

Selected Validation Data



1X10⁶ human PBMCs were surface co-stained with FITC Anti-Human CD3 and 5 ul CoraLite® Plus 405 Anti-Human CD226 (CL405-65247, Clone: 11A8) or Mouse IgG1 Isotype Control. Cells were not fixed. Lymphocytes were gated.



1X10⁶ human PBMCs were surface stained with 5 ul CoraLite® Plus 405 Anti-Human CD226 (CL405-65247, Clone: 11A8) or Mouse IgG1 Isotype Control. Cells were not fixed. Lymphocytes were gated.