

For Research Use Only

CoraLite® Plus 405 Mouse IgG2a isotype control (11A1B2)



Catalog Number: CL405-66360-2

Basic Information

Catalog Number:

CL405-66360-2

Size:

100ug , 200 µg/ml

Source:

Mouse

Isotype:

IgG2a

GenBank Accession Number:

GeneID (NCBI):

Full Name:

Purification Method:

Protein A purification

CloneNo.:

11A1B2

Excitation/Emission maxima wavelengths:

399 nm / 422 nm

Applications

Tested Applications:

FC

Species Specificity:

Megathura crenulata

Background Information

This antibody is used as the isotype control of mouse IgG2a. It can be used as the isotype control in Flow Cytometry, Immuno-Precipitation and other experiments. The immunogen of this antibody is Keyhole Limpet Hemocyanin (KLH).

Storage

Storage:

Store at 2-8°C. Avoid exposure to light. Stable for one year after shipment.

Storage Buffer:

PBS with 0.09% sodium azide and 0.5% BSA.

For technical support and original validation data for this product please contact:

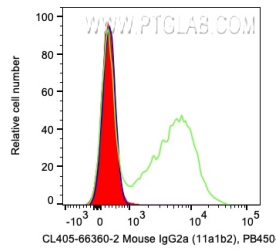
T: 1 (888) 4PTGLAB (1-888-478-4522) (toll free in USA), or 1(312) 455-8498 (outside USA)

E: proteintech@ptglab.com

W: ptglab.com

This product is exclusively available under Proteintech Group brand and is not available to purchase from any other manufacturer.

Selected Validation Data



1X10⁶ human PBMCs were surface stained with 0.2 ug CoraLite® Plus 405 Anti-Mouse IgG2a isotype control (CL405-66360-2, Clone: 11A1B2) (red), CL405 Anti-Human CD7 (green), or unstained (blue). Cells were not fixed. Lymphocytes were gated.