

For Research Use Only

# CoraLite® Plus 405 Anti-Human Endoglin/CD105 Rabbit Recombinant Antibody

Catalog Number: **CL405-98013**



## Basic Information

Catalog Number:

CL405-98013

Size:

100tests , 5 ul/test

Source:

Rabbit

Isotype:

IgG

GenBank Accession Number:

BC014271

GeneID (NCBI):

2022

UNIPROT ID:

P17813

Full Name:

endoglin

Calculated MW:

71 kDa

Purification Method:

Protein A purification

CloneNo.:

230047E5

Excitation/Emission maxima wavelengths:

399 nm / 422 nm

## Applications

Tested Applications:

FC

Species Specificity:

human

## Background Information

Endoglin (ENG, CD105) is a homodimeric cell membrane glycoprotein of 180 kDa, composed of disulphide-linked subunits of 90-95 kDa. Endoglin is a proliferation-associated and hypoxia-inducible protein mainly expressed on vascular endothelial cells. It acts as an accessory receptor for transforming growth factor beta (TGF- $\beta$ ) and is involved in vascular development and remodeling. The important role of Endoglin in angiogenesis and in tumor progression makes it an ideal target for antiangiogenic therapy and a good marker for tumor prognosis. (PMID: 1326540; 14528280; 21737653; 12773481)

## Storage

Storage:

Store at 2-8°C. Avoid exposure to light. Stable for one year after shipment.

Storage Buffer:

PBS with 0.09% sodium azide and 0.5% BSA.

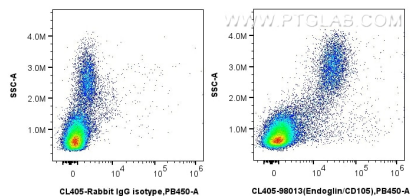
For technical support and original validation data for this product please contact:

T: 1 (888) 4PTGLAB (1-888-478-4522) (toll free in USA), or 1(312) 455-8498 (outside USA)

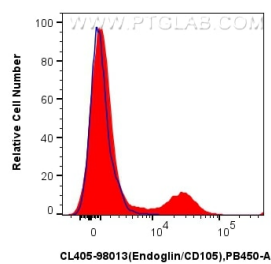
E: [proteintech@ptglab.com](mailto:proteintech@ptglab.com)  
W: [ptglab.com](http://ptglab.com)

This product is exclusively available under Proteintech Group brand and is not available to purchase from any other manufacturer.

## Selected Validation Data



1x10<sup>6</sup> human PBMCs were surface stained with 5 ul CoraLite® Plus 405 Anti-Human Endoglin/CD105 Rabbit Recombinant Antibody (CL405-98013, Clone:230047E5), or Isotype Control (blue). Cells were incubated with FC Receptor Block prior to staining. Cells were not fixed.



1x10<sup>6</sup> human PBMCs were surface stained with 5 ul CoraLite® Plus 405 Anti-Human Endoglin/CD105 Rabbit Recombinant Antibody (CL405-98013, Clone:230047E5)(red), or Isotype Control (blue). Cells were incubated with FC Receptor Block prior to staining. Cells were not fixed.