

For Research Use Only

# CoraLite® Plus 405 Anti-Mouse CD5 Rabbit Recombinant Antibody

Catalog Number: CL405-98038



## Basic Information

Catalog Number:

CL405-98038

Size:

100ug , 500 µg/ml

Source:

Rabbit

Isotype:

IgG

GenBank Accession Number:

NM\_007650.3

GeneID (NCBI):

12507

UNIPROT ID:

P13379

Full Name:

CD5 antigen

Calculated MW:

54 kDa

Purification Method:

Protein A purification

CloneNo.:

240244G7

Excitation/Emission maxima

wavelengths:

399 nm / 422 nm

## Applications

Tested Applications:

FC

Species Specificity:

mouse

## Background Information

CD5 is a type I transmembrane glycoprotein of the scavenger receptor cysteine-rich family (PMID: 12403363). CD5 is expressed on a majority of thymocytes, mature T cells, B cell subsets, and peripheral blood dendritic cells (PMID: 9858516; 6156984; 10379049; 1384337). CD5 may act as a receptor in regulating T-cell proliferation. It functions as a negative regulator of TCR signaling during thymocyte development (PMID: 7542801).

## Storage

Storage:

Store at 2-8°C. Avoid exposure to light. Stable for one year after shipment.

Storage Buffer:

PBS with 0.09% sodium azide.

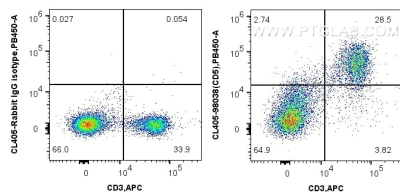
For technical support and original validation data for this product please contact:

T: 1 (888) 4PTGLAB (1-888-478-4522) (toll free in USA), or 1(312) 455-8498 (outside USA)

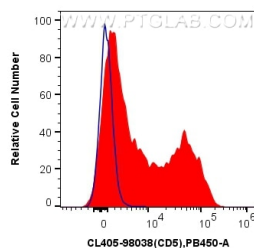
E: [proteintech@ptglab.com](mailto:proteintech@ptglab.com)  
W: [ptglab.com](http://ptglab.com)

This product is exclusively available under Proteintech Group brand and is not available to purchase from any other manufacturer.

## Selected Validation Data



1x10<sup>6</sup> mouse splenocytes were surface stained with APC Anti-Mouse CD3 and 0.25 ug CoraLite® Plus 405 Anti-Mouse CD5 Rabbit Recombinant Antibody (CL405-98038, Clone: 240244G7), or Isotype Control. Cells were not fixed.



1x10<sup>6</sup> mouse splenocytes were surface stained with 0.25 ug CoraLite® Plus 405 Anti-Mouse CD5 Rabbit Recombinant Antibody (CL405-98038, Clone: 240244G7) (red), or Isotype Control (blue). Cells were not fixed.