

For Research Use Only

FcZero-rAb® CoraLite® Plus 405 Anti-Human CD2 (TS1/8) Rabbit Recombinant Antibody

Catalog Number: CL405-FcA65565



Basic Information

Catalog Number:

CL405-FcA65565

Size:

100tests , 5 ul/test

Source:

Rabbit

Isotype:

IgG

GenBank Accession Number:

BC033583

GeneID (NCBI):

914

ENSEMBL Gene ID:

ENSG00000116824

UNIPROT ID:

P06729

Full Name:

CD2 molecule

Calculated MW:

351 aa, 39 kDa

Purification Method:

Protein A purification

CloneNo.:

TS1/8

Recommended Dilutions:

FC: 5 ul per 10⁶ cells in a 100 µl suspension

Excitation/Emission maximum wavelengths:

399 nm / 422 nm

Applications

Tested Applications:

FC

Species Specificity:

human

Positive Controls:

FC : human PBMCs,

Background Information

CD2 is a cell surface glycoprotein present on a majority of thymocytes, all mature T cells and subset of NK cells but not on B lymphocytes. It is a pan T-cell marker. CD2 interacts with lymphocyte function-associated antigen (LFA-3/CD58) and CD48/BCM1 to mediate adhesion between T-cells and other cell types. CD2 is implicated in the triggering of T-cells, the cytoplasmic domain is implicated in the signaling function.

Storage

Storage:

Store at 2-8°C. Avoid exposure to light. Stable for one year after shipment.

Storage Buffer:

PBS with 0.09% sodium azide and 0.5% BSA, pH7.3

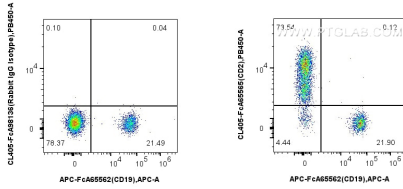
For technical support and original validation data for this product please contact:

T: 1 (888) 4PTGLAB (1-888-478-4522) (toll free in USA), or 1(312) 455-8498 (outside USA)

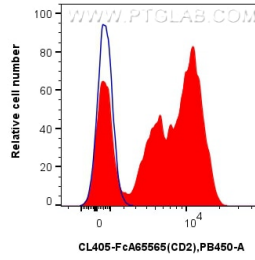
E: proteintech@ptglab.com
W: ptglab.com

This product is exclusively available under Proteintech Group brand and is not available to purchase from any other manufacturer.

Selected Validation Data



1x10⁶ human PBMCs were surface stained with FcZero-rAb@ APC Anti-Human CD19, and 5 ul CoraLite® Plus 405 Anti-Human CD2 (TS1/8) Rabbit RecAb (CL405-FcA65565, Clone: TS1/8) or FcZero-rAb@ CoraLite® Plus 405 Rabbit IgG Isotype Control Recombinant Antibody (CL405-FcA98136, Clone: 240953C9). Cells were not fixed. Lymphocytes were gated.



1x10⁶ human PBMCs were surface stained with 5 ul CoraLite® Plus 405 Anti-Human CD2 (TS1/8) Rabbit RecAb (CL405-FcA65565, Clone: TS1/8) (red) or FcZero-rAb@ CoraLite® Plus 405 Rabbit IgG Isotype Control Recombinant Antibody (CL405-FcA98136, Clone: 240953C9) (blue). Cells were not fixed. Lymphocytes were gated.