

For Research Use Only

FcZero-rAb® CoraLite® Plus 405 Anti-Human CD226 (11A8) Rabbit Recombinant Antibody



Catalog Number: CL405-FcA65573

Basic Information

Catalog Number:

CL405-FcA65573

Size:

100tests , 5 ul/test

Source:

Rabbit

Isotype:

IgG

GenBank Accession Number:

BC074787

GeneID (NCBI):

10666

ENSEMBL Gene ID:

ENSG00000150637

UNIPROT ID:

Q15762

Full Name:

CD226 molecule

Calculated MW:

336 aa, 39 kDa

Purification Method:

Protein A purification

CloneNo.:

11A8

Recommended Dilutions:

FC: 5 ul per 10⁶ cells in a 100 µl suspension

Excitation/Emission maxima wavelengths:

399 nm / 422 nm

Applications

Tested Applications:

FC

Species Specificity:

human

Positive Controls:

FC : human PBMCs,

Background Information

CD226 (DNAM-1) is a ~65 kDa glycoprotein expressed on the surface of NK cells, platelets, monocytes and a subset of T cells. It is a member of the Ig-superfamily containing 2 Ig-like domains of the V-set. CD226 mediates cellular adhesion of platelets and megakaryocytic cells to vascular endothelial cells. The protein also plays a role in megakaryocytic cell maturation. Interactions of CD226 and its ligands, CD155 and CD112, induce NK and T cell-mediated cytotoxicity and cytokine secretion (PMID: 15039383).

Storage

Storage:

Store at 2-8°C. Avoid exposure to light. Stable for one year after shipment.

Storage Buffer:

PBS with 0.09% sodium azide and 0.5% BSA, pH7.3

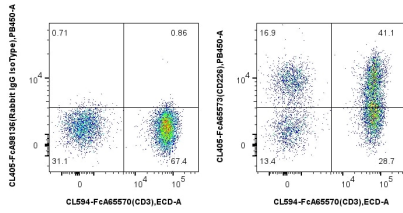
For technical support and original validation data for this product please contact:

T: 1 (888) 4PTGLAB (1-888-478-4522) (toll free in USA), or 1(312) 455-8498 (outside USA)

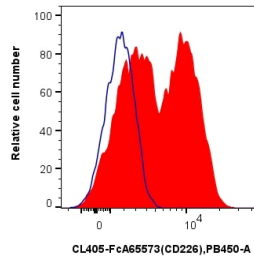
E: proteintech@ptglab.com
W: ptglab.com

This product is exclusively available under Proteintech Group brand and is not available to purchase from any other manufacturer.

Selected Validation Data



1x10⁶ human PBMCs were surface stained with CoraLite® Plus 594 Anti-Human CD3 (UCHT1), and 5 ul CoraLite® Plus 405 Anti-Human CD226 (11A8) Rabbit RecAb (CL405-FcA65573, Clone: 11A8) or Rabbit IgG Isotype Control RecAb (CL405-FcA98136, Clone: 240953C9). Cells were not fixed. Lymphocytes were gated.



1x10⁶ human PBMCs were surface stained with 5 ul CoraLite® Plus 405 Anti-Human CD226 (11A8) Rabbit RecAb (CL405-FcA65573, Clone: 11A8) (red) or Rabbit IgG Isotype Control RecAb (CL405-FcA98136, Clone: 240953C9) (blue). Cells were not fixed. Lymphocytes were gated.