

For Research Use Only

FcZero-rAb® CoraLite® Plus 405 Anti-Human CSF2RA/CD116 Rabbit Recombinant Antibody

Catalog Number: CL405-FcA98066



Basic Information

Catalog Number:

CL405-FcA98066

Size:

100 tests, 5 ul/test

Source:

Rabbit

Isotype:

IgG

GenBank Accession Number:

BC002635

GeneID (NCBI):

1438

UNIPROT ID:

P15509

Full Name:

colony stimulating factor 2 receptor, alpha, low-affinity (granulocyte-macrophage)

Calculated MW:

46 kDa

Purification Method:

Protein A purification

CloneNo.:

241266B11

Recommended Dilutions:

FC: 5 ul per 10⁶ cells in a 100 µl suspension

Excitation/Emission maxima wavelengths:

399 nm / 422 nm

Applications

Tested Applications:

FC

Species Specificity:

human

Positive Controls:

FC : human PBMCs,

Background Information

CD116, also named as CSF2RA CDw116 CSF2RAX CSF2RAY CSF2RX CSF2RY GM-CSF-R-alpha GMCSFR and GMR, is a low affinity receptor for granulocyte-macrophage colony-stimulating factor. CD116 transduces a signal that results in the proliferation, differentiation, and functional activation of hematopoietic cells.

Storage

Storage:

Store at 2-8°C. Avoid exposure to light. Stable for one year after shipment.

Storage Buffer:

PBS with 0.09% sodium azide and 0.5% BSA, pH7.3

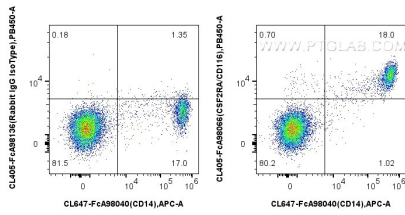
For technical support and original validation data for this product please contact:

T: 1 (888) 4PTGLAB (1-888-478-4522) (toll free in USA), or 1(312) 455-8498 (outside USA)

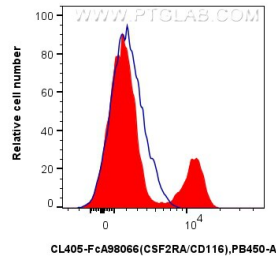
E: proteintech@ptglab.com
W: ptglab.com

This product is exclusively available under Proteintech Group brand and is not available to purchase from any other manufacturer.

Selected Validation Data



1x10⁶ human PBMCs were surface stained with CoraLite® Plus 647 Anti-Human CD14, and 5 ul CoraLite® Plus 405 Anti-Human CSF2RA/CD116 Rabbit RecAb (CL405-FcA98066, Clone: 241266B11) or FcZero-rAb® CoraLite® Plus 405 Rabbit IgG Isotype Control Recombinant Antibody (CL405-FcA98136, Clone: 240953C9). Cells were not fixed.



1x10⁶ human PBMCs were surface stained with 5 ul CoraLite® Plus 405 Anti-Human CSF2RA/CD116 Rabbit RecAb (CL405-FcA98066, Clone: 241266B11) (red) or FcZero-rAb® CoraLite® Plus 405 Rabbit IgG Isotype Control Recombinant Antibody (CL405-FcA98136, Clone: 240953C9) (blue). Cells were not fixed.