

For Research Use Only

# CoraLite® Plus 488-conjugated Recoverin Polyclonal antibody

Catalog Number: CL488-10073



## Basic Information

### Catalog Number:

CL488-10073

### Size:

100ul , Concentration: 1000 ug/ml by Nanodrop;

### Source:

Rabbit

### Isotype:

IgG

### Immunogen Catalog Number:

AG0119

### GenBank Accession Number:

BC001720

### GeneID (NCBI):

5957

### UNIPROT ID:

P35243

### Full Name:

recoverin

### Calculated MW:

24 kDa

### Observed MW:

23 kDa

### Purification Method:

Antigen affinity purification

### Recommended Dilutions:

IF-P 1:50-1:500

### Excitation/Emission maxima wavelengths:

493 nm / 522 nm

## Applications

### Tested Applications:

IF-P

### Species Specificity:

human, mouse, rat

### Positive Controls:

IF-P : mouse eye tissue,

## Background Information

Recoverin, belonging to a family of the neuronal calcium sensor (NCS) proteins, has a restricted expression in retinal photoreceptors or neurons or neuroendocrine cells. It has been suggested to play a role in light and dark adaptation by regulating rhodopsin phosphorylation. Recently, it has been found that autoantibodies against recoverin (24 kDa) have been strongly associated with cancer-associated retinopathy (CAR) syndrome, a paraneoplastic disease of the retina. But functions of recoverin in cancer cells remain unknown.

## Storage

### Storage:

Store at -20°C. Avoid exposure to light. Stable for one year after shipment.

### Storage Buffer:

PBS with 50% Glycerol, 0.05% Proclin300, 0.5% BSA, pH 7.3.

Aliquoting is unnecessary for -20°C storage

For technical support and original validation data for this product please contact:

T: 1 (888) 4PTGLAB (1-888-478-4522) (toll free in USA), or 1(312) 455-8498 (outside USA)

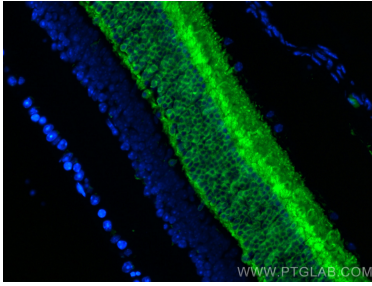
E: [proteintech@ptglab.com](mailto:proteintech@ptglab.com)

W: [ptglab.com](http://ptglab.com)

This product is exclusively available under Proteintech Group brand and is not available to purchase from any other manufacturer.

---

## Selected Validation Data



Immunofluorescent analysis of (4% PFA) fixed paraffin-embedded mouse eye tissue using CoraLite® Plus 488 Recoverin antibody (CL488-10073) at dilution of 1:200. Heat mediated antigen retrieval with Tris-EDTA buffer (pH 9.0).