

For Research Use Only

CoraLite® Plus 488-conjugated Cytokeratin 15 Polyclonal antibody

Catalog Number:CL488-10137



Basic Information

Catalog Number: CL488-10137	GenBank Accession Number: BC002641	Purification Method: Antigen affinity Purification
Size: 100ul , Concentration: 1000 ug/ml by Nanodrop;	GeneID (NCBI): 3866	Recommended Dilutions: IF/ICC: 1:50-1:500
Source: Rabbit	UNIPROT ID: P19012	Excitation/Emission maxima wavelengths: 493 nm / 522 nm
Isotype: IgG	Full Name: keratin 15	
Immunogen Catalog Number: AG0185	Calculated MW: 49 kDa	
	Observed MW: 49 kDa	

Applications

Tested Applications: IF/ICC	Positive Controls: IF/ICC : A431 cells,
Species Specificity: human	

Background Information

Keratins are a large family of proteins that form the intermediate filament cytoskeleton of epithelial cells, which are classified into two major sequence types. Type I keratins are a group of acidic intermediate filament proteins, including K9-K23, and the hair keratins Ha1-Ha8. Type II keratins are the basic or neutral counterparts to the acidic type I keratins, including K1-K8, and the hair keratins, Hb1-Hb6. Keratin 15 is a type I cytokeratin. It is found in some progenitor basal cells within complex epithelia.

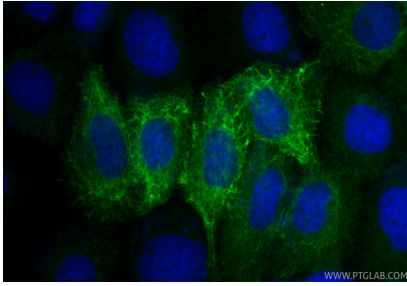
Storage

Storage:
Store at -20°C. Avoid exposure to light. Stable for one year after shipment.
Storage Buffer:
PBS with 50% glycerol, 0.05% Proclin300, 0.5% BSA, pH7.3
Aliquoting is unnecessary for -20°C storage

For technical support and original validation data for this product please contact:
T: 1 (888) 4PTGLAB (1-888-478-4522) (toll free in USA), or 1(312) 455-8498 (outside USA)
E: proteintech@ptglab.com
W: ptglab.com

This product is exclusively available under Proteintech Group brand and is not available to purchase from any other manufacturer.

Selected Validation Data



Immunofluorescent analysis of (-20°C Methanol)
fixed A431 cells using Coralite® Plus 488
Cytochrome 15 antibody (CL488-10137) at dilution
of 1:200.