

For Research Use Only

CoraLite® Plus 488-conjugated Mitofilin Polyclonal antibody



Catalog Number: CL488-10179

Featured Product

Basic Information

Catalog Number: CL488-10179	GenBank Accession Number: BC002412	Purification Method: Antigen affinity purification
Size: 100ul , Concentration: 1000 µg/ml by Nanodrop;	GeneID (NCBI): 10989	Excitation/Emission maxima wavelengths: 488 nm / 515 nm
Source: Rabbit	Full Name: inner membrane protein, mitochondrial (mitofilin)	
Isotype: IgG	Calculated MW: 90 kDa	
Immunogen Catalog Number: AG0102	Observed MW: 80-90 kDa	

Applications

Tested Applications:
FC (Intra)

Species Specificity:
human, mouse, rat

Background Information

IMMT (also known as mitofilin) is an inner mitochondrial membrane protein that is preferentially expressed in heart tissue and is commonly used as the marker for mitochondria. Mitofilin is known to be a critical organizer of mitochondrial cristae morphology and is indispensable for normal mitochondrial function. Three isoforms of mitofilin exist due to the alternative splicing. All three proteins of 87kD, 89kD and 80kD can be detected in immunoblot analysis with this antibody.

Storage

Storage:
Store at -20°C. Avoid exposure to light.

Storage Buffer:
PBS with 50% Glycerol, 0.05% Proclin300, 0.5% BSA, pH 7.3.

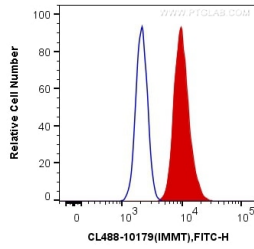
Aliquoting is unnecessary for -20°C storage

*** 20ul sizes contain 0.1% BSA

For technical support and original validation data for this product please contact:
T: 1 (888) 4PTGLAB (1-888-478-4522) (toll free in USA), or 1(312) 455-8498 (outside USA) E: proteintech@ptglab.com
W: ptglab.com

This product is exclusively available under Proteintech Group brand and is not available to purchase from any other manufacturer.

Selected Validation Data



1X10⁶ HEK-293T cells were intracellularly stained with 0.4 ug CoraLite® Plus 488 Anti-Human Mitofilin (CL488-10179) (red), or 0.4 ug Control Antibody. Cells were fixed with 4% PFA and permeabilized with Flow Cytometry Perm Buffer (PF00011-C).