

For Research Use Only

CoraLite® Plus 488-conjugated RCN2 Polyclonal antibody



Catalog Number: CL488-10193

Featured Product

Basic Information

Catalog Number:

CL488-10193

Size:

100ul , Concentration: 1000 µg/ml by Nanodrop;

Source:

Rabbit

Isotype:

IgG

Immunogen Catalog Number:

AG0247

GenBank Accession Number:

BC004892

GeneID (NCBI):

5955

UNIPROT ID:

Q14257

Full Name:

reticulocalbin 2, EF-hand calcium binding domain

Calculated MW:

37 kDa

Observed MW:

55 kDa

Purification Method:

Antigen affinity purification

Recommended Dilutions:

IF 1:50-1:500

Excitation/Emission maxima wavelengths:

493 nm / 522 nm

Applications

Tested Applications:

IF

Species Specificity:

human, mouse, rat

Positive Controls:

IF : HepG2 cells,

Background Information

Reticulocalbin 2 (RCN2) is a Ca(2+)-binding protein that is specifically localized in the endoplasmic reticulum (ER). It is also termed ERC-55, i.e. ER calcium-binding protein of 55 kDa. It is a single copy gene and is encoded by an approximately 1900-base mRNA, which shows a ubiquitous expression pattern. The protein comprises an amino-terminal signal sequence followed by six copies of the EF-hand Ca²⁺ binding motif.

Storage

Storage:

Store at -20°C. Avoid exposure to light. Stable for one year after shipment.

Storage Buffer:

PBS with 50% Glycerol, 0.05% Proclin300, 0.5% BSA, pH 7.3.

Aliquoting is unnecessary for -20°C storage

*** 20ul sizes contain 0.1% BSA

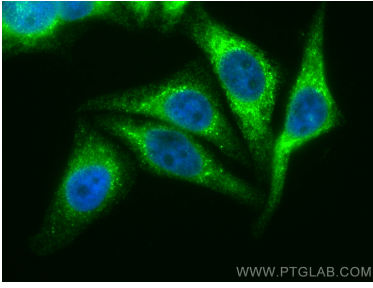
For technical support and original validation data for this product please contact:

T: 1 (888) 4PTGLAB (1-888-478-4522) (toll free in USA), or 1(312) 455-8498 (outside USA)

E: proteintech@ptglab.com
W: ptglab.com

This product is exclusively available under Proteintech Group brand and is not available to purchase from any other manufacturer.

Selected Validation Data



Immunofluorescent analysis of (4% PFA) fixed HepG2 cells using Coralite® Plus 488 RCN2 antibody (CL488-10193) at dilution of 1:200.