

For Research Use Only

CoraLite® Plus 488-conjugated PDLIM7 Polyclonal antibody

Catalog Number: CL488-10221

Featured Product



Basic Information

Catalog Number:

CL488-10221

Size:

100ul , Concentration: 1000 ug/ml by
Nanodrop;

Source:

Rabbit

Isotype:

IgG

Immunogen Catalog Number:

AG0264

GenBank Accession Number:

BC001093

GeneID (NCBI):

9260

UNIPROT ID:

Q9NR12

Full Name:

PDZ and LIM domain 7 (enigma)

Calculated MW:

55/60 kDa

Observed MW:

55 kDa

Purification Method:

Antigen affinity purification

Recommended Dilutions:

IF/ICC 1:50-1:500

Excitation/Emission maxima
wavelengths:

493 nm / 522 nm

Applications

Tested Applications:

IF/ICC, FC (Intra)

Species Specificity:

human

Positive Controls:

IF/ICC : SKOV-3 cells,

Background Information

PDLIM7 (PDZ and LIM domain protein 7), also known as ENIGMA or LIM mineralization protein 1 (LMP-1), is a member of PDZ-LIM proteins which function as scaffold to interact with multiple proteins through N-terminal PDZ domain and C-terminal LIM domain. Its LIM domains bind to proteins involved in mitogenic signaling, and it plays a role in tumorigenesis by promoting cancer cell invasion and metastasis. In addition, PDLIM7 is an essential positive regulator of osteoblast differentiation and maturation and bone formation.

Storage

Storage:

Store at -20°C. Avoid exposure to light. Stable for one year after shipment.

Storage Buffer:

PBS with 50% Glycerol, 0.05% Proclin300, 0.5% BSA, pH 7.3.

Aliquoting is unnecessary for -20°C storage

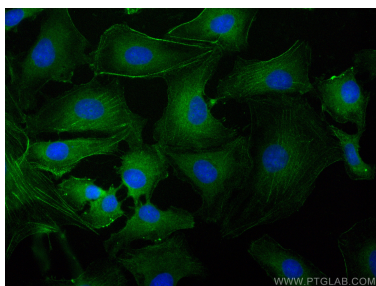
For technical support and original validation data for this product please contact:

T: 1 (888) 4PTGLAB (1-888-478-4522) (toll free
in USA), or 1(312) 455-8498 (outside USA)

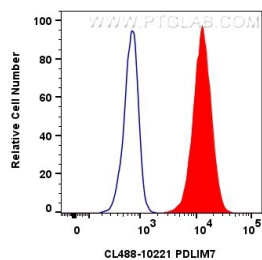
E: proteintech@ptglab.com
W: ptglab.com

This product is exclusively available under Proteintech Group brand and is not available to purchase from any other manufacturer.

Selected Validation Data



Immunofluorescent analysis of (-20°C Ethanol) fixed SKOV-3 cells using CoraLite® Plus 488 PDLIM7 antibody (CL488-10221) at dilution of 1:200.



1x10⁶ HeLa cells were intracellularly stained with 0.8 ug CoraLite® Plus 488 Pdlm7 Polyclonal Antibody (CL488-10221)(red), or 0.8 ug CoraLite® Plus 488-conjugated Rabbit IgG control Rabbit PolyAb (CL488-30000) (blue). Cells were fixed with 4% PFA and permeabilized with Flow Cytometry Perm Buffer (PF00011-C).