

For Research Use Only

CoraLite® Plus 488-conjugated EIF2S2 Polyclonal antibody

Catalog Number: CL488-10227

Featured Product



Basic Information

Catalog Number:

CL488-10227

Size:

100ul , Concentration: 1000 ug/ml by Nanodrop;

Source:

Rabbit

Isotype:

IgG

Immunogen Catalog Number:

AG0269

GenBank Accession Number:

BC000461

GeneID (NCBI):

8894

UNIPROT ID:

P20042

Full Name:

eukaryotic translation initiation factor 2, subunit 2 beta, 38kDa

Calculated MW:

38 kDa

Observed MW:

50 kDa

Purification Method:

Antigen affinity purification

Recommended Dilutions:

IF/ICC 1:50-1:500

Excitation/Emission maxima wavelengths:

493 nm / 522 nm

Applications

Tested Applications:

IF/ICC

Species Specificity:

human, mouse, rat

Positive Controls:

IF/ICC : HepG2 cells,

Background Information

Eukaryotic translation initiation factor 2 (eIF2) is composed of three subunits, eIF2 alpha, eIF2 beta (EIF2S2), and eIF2 gamma, which are present in equal molar amounts. eIF2 beta plays a central role in the maintenance of what is generally considered a rate-limiting step in mRNA translation. In the early steps of protein synthesis, eIF2 beta binds GTP and Met-tRNA and transfers Met-tRNA to the 40S ribosomal subunit. At the end of the initiation process, GTP bound to eIF2 beta is hydrolyzed to GDP and the eIF2/GDP complex is released from the ribosome. The exchange of GDP bound to eIF2 beta for GTP is a prerequisite to binding Met-tRNA and is mediated by eIF2 beta, which recycles the eIF2 complex for another round of initiation.

Storage

Storage:

Store at -20°C. Avoid exposure to light. Stable for one year after shipment.

Storage Buffer:

PBS with 50% Glycerol, 0.05% Proclin300, 0.5% BSA, pH 7.3.

Aliquoting is unnecessary for -20°C storage

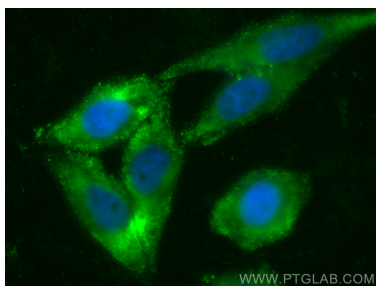
For technical support and original validation data for this product please contact:

T: 1 (888) 4PTGLAB (1-888-478-4522) (toll free in USA), or 1(312) 455-8498 (outside USA)

E: proteintech@ptglab.com
W: ptglab.com

This product is exclusively available under Proteintech Group brand and is not available to purchase from any other manufacturer.

Selected Validation Data



Immunofluorescent analysis of (-20°C Ethanol) fixed HepG2 cells using CoraLite® Plus 488 EIF2S2 antibody (CL488-10227) at dilution of 1:200.