

For Research Use Only

# CoraLite® Plus 488-conjugated VPS35 Polyclonal antibody

Catalog Number: CL488-10236

Featured Product



## Basic Information

Catalog Number:

CL488-10236

Size:

100ul, Concentration: 1000 ug/ml by Nanodrop;

Source:

Rabbit

Isotype:

IgG

Immunogen Catalog Number:

AG0340

GenBank Accession Number:

BC002414

GeneID (NCBI):

55737

UNIPROT ID:

Q96QK1

Full Name:

vacuolar protein sorting 35 homolog (S. cerevisiae)

Calculated MW:

92 kDa

Observed MW:

80-92 kDa

Purification Method:

Antigen affinity Purification

Recommended Dilutions:

IF/ICC 1:50-1:500

Excitation/Emission maxima wavelengths:

493 nm / 522 nm

## Applications

Tested Applications:

IF/ICC

Species Specificity:

human, mouse, rat

Positive Controls:

IF/ICC : HepG2 cells,

## Background Information

VPS35 protein belongs to a group of vacuolar protein sorting (VPS) proteins, which ensure the proper delivery of organelle-specific proteins in eukaryotic cells. VPS35 is the core of a multimeric complex, termed the retromer complex, which is involved in the retrograde transport of proteins from endosomes to the trans-Golgi network. Vps35 serves as the core of the multimeric complex by binding directly to Vps26 and Vps29 and SNX1. Northern blot analyses in 16 tissues showed that one transcript of Vps35 with a size of 3.6 kb was highly expressed in the brain, heart, testis, ovary, small intestine, spleen, skeletal muscle, and placenta and expressed at moderate or low levels in other tissues. Another transcript of Vps35, a message of 3.0 kb, was also expressed proportionally lower levels than the 3.6-kb transcript in all the tissues except that the 3.0-kb transcript was not detected in the brain. Human Vps35 is mapped at 16q13-q21.

## Storage

Storage:

Store at -20°C. Avoid exposure to light. Stable for one year after shipment.

Storage Buffer:

PBS with 50% Glycerol, 0.05% Proclin300, 0.5% BSA, pH 7.3.

Aliquoting is unnecessary for -20°C storage

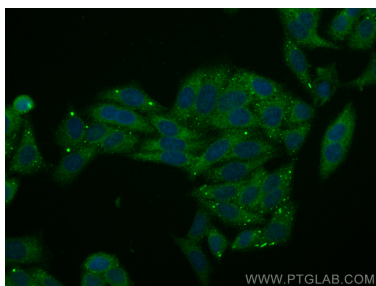
For technical support and original validation data for this product please contact:

T: 1 (888) 4PTGLAB (1-888-478-4522) (toll free in USA), or 1(312) 455-8498 (outside USA)

E: [proteintech@ptglab.com](mailto:proteintech@ptglab.com)  
W: [ptglab.com](http://ptglab.com)

This product is exclusively available under Proteintech Group brand and is not available to purchase from any other manufacturer.

## Selected Validation Data



Immunofluorescent analysis of (-20°C Ethanol) fixed HepG2 cells using CoraLite® Plus 488 VPS35 antibody (CL488-10236) at dilution of 1:200.