

For Research Use Only

CoraLite® Plus 488-conjugated S100A6 Polyclonal antibody

Catalog Number: CL488-10245

Featured Product

1 Publications



Basic Information

Catalog Number:

CL488-10245

Size:

100ul, Concentration: 1000 ug/ml by Nanodrop;

Source:

Rabbit

Isotype:

IgG

Immunogen Catalog Number:

AG0385

GenBank Accession Number:

BC001431

GeneID (NCBI):

6277

UNIPROT ID:

P06703

Full Name:

S100 calcium binding protein A6

Calculated MW:

10 kDa

Purification Method:

Antigen affinity purification

Recommended Dilutions:

IF/ICC 1:50-1:500

Excitation/Emission maxima wavelengths:

493 nm / 522 nm

Applications

Tested Applications:

IF/ICC, FC (Intra)

Species Specificity:

human

Cited Species:

human

Positive Controls:

IF/ICC : MCF-7 cells,

Background Information

S100A6 is also named as calcyclin, prolactin receptor-associated protein (PRA), growth factor-inducible protein 2A9 or MLN4. It belongs to S100 family of low molecular weight, acidic, calcium-binding proteins which contain two EF-hand calcium binding sites. S100A6 may function as a calcium sensor to activate several processes in the calcium signal transduction pathway of cell growth, proliferation, secretion and exocytosis. The antibody is specific for S100A6.

Notable Publications

| Author | Pubmed ID | Journal | Application |
|----------|-----------|---------|-------------|
| Yan Zhai | 37609402 | Heliyon | FC |

Storage

Storage:

Store at -20°C. Avoid exposure to light. Stable for one year after shipment.

Storage Buffer:

PBS with 50% Glycerol, 0.05% Proclin300, 0.5% BSA, pH 7.3.

Aliquoting is unnecessary for -20°C storage

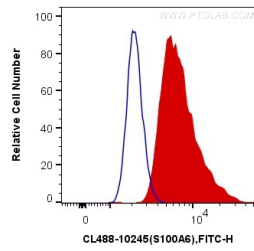
For technical support and original validation data for this product please contact:

T: 1 (888) 4PTGLAB (1-888-478-4522) (toll free in USA), or 1(312) 455-8498 (outside USA)

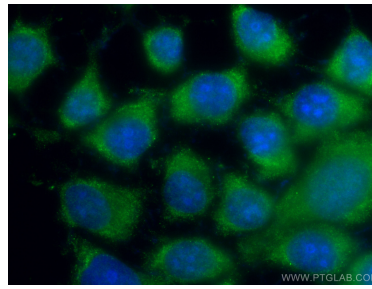
E: proteintech@ptglab.com
W: ptglab.com

This product is exclusively available under Proteintech Group brand and is not available to purchase from any other manufacturer.

Selected Validation Data



1X10⁶ MCF-7 cells were intracellularly stained with 0.4 ug Coralite® Plus 488 Anti-Human S100A6 (CL488-10245) (red), or 0.4 ug Control Antibody. Cells were fixed and permeabilized with Transcription Factor Staining Buffer Kit (PF00011).



Immunofluorescent analysis of (-20°C Ethanol) fixed MCF-7 cells using Coralite® Plus 488 S100A6 antibody (CL488-10245) at dilution of 1:200.