

For Research Use Only

# CoraLite® Plus 488-conjugated Cdc20 Polyclonal antibody

Catalog Number: CL488-10252

Featured Product



## Basic Information

### Catalog Number:

CL488-10252

### Size:

100ul , Concentration: 1000 ug/ml by Nanodrop;

### Source:

Rabbit

### Isotype:

IgG

### Immunogen Catalog Number:

AG0295

### GenBank Accession Number:

BC001088

### GeneID (NCBI):

991

### UNIPROT ID:

Q12834

### Full Name:

cell division cycle 20 homolog (S. cerevisiae)

### Calculated MW:

55 kDa

### Observed MW:

55 kDa

### Purification Method:

Antigen affinity purification

### Recommended Dilutions:

IF/ICC 1:50-1:500

### Excitation/Emission maxima wavelengths:

493 nm / 522 nm

## Applications

### Tested Applications:

IF/ICC

### Species Specificity:

human

### Positive Controls:

IF/ICC : HeLa cells, U2OS cells

## Background Information

Cdc20 (Cell-division cycle protein 20 homologue) is also named as p55CDC and belongs to the WD repeat CDC20/Fizzy family. Cdc20 has important functions in chromosome segregation and mitotic exit. Cdc20 is the target of the spindle assembly checkpoint (SAC) and a key cofactor of the anaphase-promoting complex or cyclosome (APC/CCDC20) E3 ubiquitin ligase, thus regulating APC/C ubiquitin activity on specific substrates for their subsequent degradation by the proteasome (PMID: 28202332). The 55-kDa band corresponded to the size of Cdc20 (PMID: 22566641).

## Storage

### Storage:

Store at -20°C. Avoid exposure to light. Stable for one year after shipment.

### Storage Buffer:

PBS with 50% Glycerol, 0.05% Proclin300, 0.5% BSA, pH 7.3.

Aliquoting is unnecessary for -20°C storage

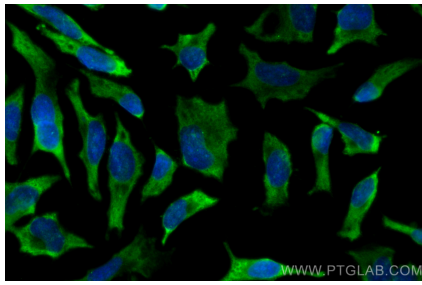
For technical support and original validation data for this product please contact:

T: 1 (888) 4PTGLAB (1-888-478-4522) (toll free in USA), or 1(312) 455-8498 (outside USA)

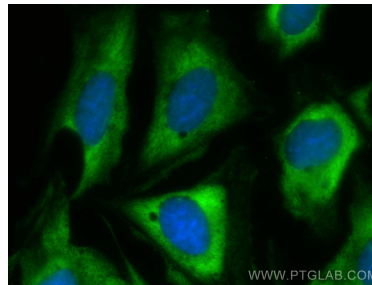
E: [proteintech@ptglab.com](mailto:proteintech@ptglab.com)  
W: [ptglab.com](http://ptglab.com)

This product is exclusively available under Proteintech Group brand and is not available to purchase from any other manufacturer.

## Selected Validation Data



Immunofluorescent analysis of (-20°C Methanol) fixed HeLa cells using Coralite® Plus 488 Cdc20 antibody (CL488-10252) at dilution of 1:200.



Immunofluorescent analysis of (-20°C Methanol) fixed U2OS cells using Coralite® Plus 488 Cdc20 antibody (CL488-10252) at dilution of 1:200.