

For Research Use Only

CoraLite® Plus 488-conjugated IgG Polyclonal antibody



Catalog Number: **CL488-10284**

1 Publications

Basic Information

Catalog Number:

CL488-10284

GenBank Accession Number:

GeneID (NCBI):

Size:

100ul , Concentration: 1000 µg/ml by
Nanodrop;

Full Name:

Calculated MW:

155 kDa

Source:

Rabbit

Observed MW:

25 kDa, 50 kDa, 150 kDa

Isotype:

IgG

Purification Method:

Antigen affinity purification

Recommended Dilutions:

WB 1:1000-1:4000

IF 1:50-1:500

Excitation/Emission maxima
wavelengths:

493 nm / 522 nm

Applications

Tested Applications:

IF, WB

Cited Applications:

IF

Species Specificity:

human

Positive Controls:

WB : human plasma,

IF : human tonsillitis tissue,

Background Information

This rabbit poly clonal antibody recognizes the human IgG.

Notable Publications

Author	Pubmed ID	Journal	Application
Bingda Li	35923860	Oxid Med Cell Longev	IF

Storage

Storage:

Store at -20°C. Avoid exposure to light. Stable for one year after shipment.

Storage Buffer:

PBS with 50% Glycerol, 0.05% Proclin300, 0.5% BSA, pH 7.3.

Aliquoting is unnecessary for -20°C storage

*** 20ul sizes contain 0.1% BSA

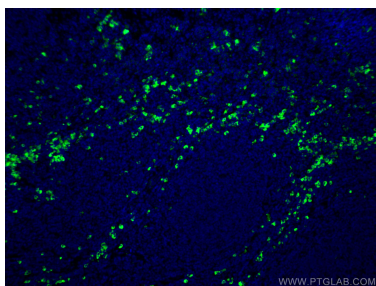
For technical support and original validation data for this product please contact:

T: 1 (888) 4PTGLAB (1-888-478-4522) (toll free
in USA), or 1(312) 455-8498 (outside USA)

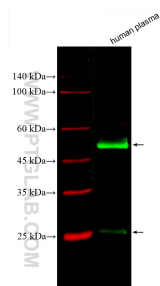
E: proteintech@ptglab.com
W: ptglab.com

This product is exclusively available under Proteintech Group brand and is not available to purchase from any other manufacturer.

Selected Validation Data



Immunofluorescent analysis of (4% PFA) fixed human tonsillitis tissue using CoraLite® Plus 488 Human IgG antibody (CL488-10284) at dilution of 1:200.



Human plasma were subjected to SDS PAGE followed by western blot with CL488-10284 (Human IgG antibody) at dilution of 1:2000 incubated at room temperature for 1.5 hours.