

For Research Use Only

CoraLite® Plus 488-conjugated MME,CD10 Polyclonal antibody



Catalog Number:CL488-10302

Basic Information

| | | |
|---|---|---|
| Catalog Number: CL488-10302 | GenBank Accession Number: BC101658 | Purification Method: Protein A purification |
| Size: 100ul , Concentration: 1000 µg/ml by Nanodrop; | GeneID (NCBI): 4311 | Excitation/Emission maxima wavelengths: 493 nm / 522 nm |
| Source: Rabbit | UNIPROT ID: P08473 | |
| Isotype: IgG | Full Name: membrane metallo-endopeptidase | |
| Immunogen Catalog Number: AG0427 | Calculated MW: 750 aa, 86 kDa | |
| | Observed MW: 90-100 kDa | |

Applications

Tested Applications:
FC (Intra)

Species Specificity:
human, mouse, rat

Background Information

MME is also names as neprilysin,CALLA,NEP,SFE,CD10 and belongs to the peptidase M13 family.It is a glycoprotein that is particularly abundant in kidney, where it is present on the brush border of proximal tubules and on glomerular epithelium.CD10 has been considered a useful marker in the diagnosis of renal carcinomas, because of its expression in clear cell and papillary renal cell carcinomas and its absence in chromophobe renal cell carcinomas(PMID:15286660).

Storage

Storage:
Store at -20°C. Avoid exposure to light. Stable for one year after shipment.

Storage Buffer:
PBS with 50% Glycerol, 0.05% Proclin300, 0.5% BSA, pH 7.3.

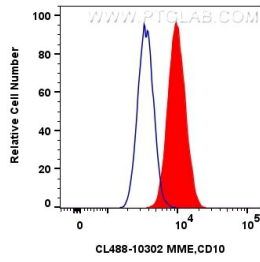
Aliquoting is unnecessary for -20°C storage

*** 20ul sizes contain 0.1% BSA

For technical support and original validation data for this product please contact:
T: 1 (888) 4PTGLAB (1-888-478-4522) (toll free in USA), or 1(312) 455-8498 (outside USA)
E: proteintech@ptglab.com
W: ptglab.com

This product is exclusively available under Proteintech Group brand and is not available to purchase from any other manufacturer.

Selected Validation Data



1x10⁶ Ramos cells were intracellularly stained with 0.8 ug CoraLite® Plus 488 Anti-Human MME,CD10 (CL488-10302)(red), or 0.8 ug CoraLite® Plus 488-conjugated Rabbit IgG control Rabbit PolyAb (CL488-30000) (blue). Cells were fixed with 4% PFA and permeabilized with Flow Cytometry Perm Buffer (PF00011-C).