

For Research Use Only

CoraLite® Plus 488-conjugated TCP1 Polyclonal antibody

Catalog Number: CL488-10320

Featured Product



Basic Information

Catalog Number:

CL488-10320

Size:

100ul , Concentration: 1000 ug/ml by 6950

Nanodrop;

Source:

Rabbit

Isotype:

IgG

Immunogen Catalog Number:

AG0389

GenBank Accession Number:

BC000665

GeneID (NCBI):

6950

UNIPROT ID:

P17987

Full Name:

t-complex 1

Calculated MW:

60 kDa

Observed MW:

55-60 kDa

Purification Method:

Antigen affinity purification

Recommended Dilutions:

IF/ICC 1:50-1:500

Excitation/Emission maxima wavelengths:

493 nm / 522 nm

Applications

Tested Applications:

IF/ICC, FC (Intra)

Species Specificity:

human, mouse

Positive Controls:

IF/ICC : HeLa cells,

Storage

Storage:

Store at -20°C. Avoid exposure to light. Stable for one year after shipment.

Storage Buffer:

PBS with 50% Glycerol, 0.05% Proclin300, 0.5% BSA, pH 7.3.

Aliquoting is unnecessary for -20°C storage

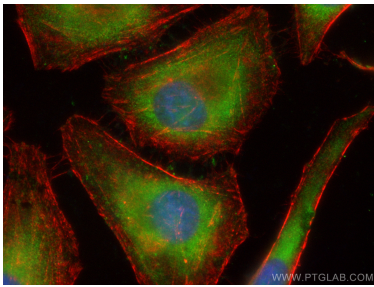
For technical support and original validation data for this product please contact:

T: 1 (888) 4PTGLAB (1-888-478-4522) (toll free in USA), or 1(312) 455-8498 (outside USA)

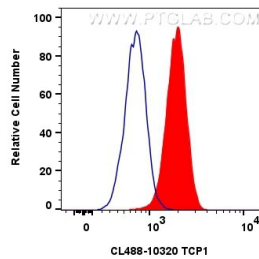
E: proteintech@ptglab.com
W: ptglab.com

This product is exclusively available under Proteintech Group brand and is not available to purchase from any other manufacturer.

Selected Validation Data



Immunofluorescent analysis of (-20°C Ethanol) fixed HeLa cells using Coralite® Plus 488 TCP1 antibody (CL488-10320) at dilution of 1:200, CL594-Phalloidin (red).



1x10⁶ HeLa cells were intracellularly stained with 0.8 ug Coralite® Plus 488 Tcp1 Polyclonal Antibody (CL488-10320)(red), or 0.8 ug Coralite® Plus 488-conjugated Rabbit IgG control Rabbit PolyAb (CL488-30000) (blue). Cells were fixed with 4% PFA and permeabilized with Flow Cytometry Perm Buffer (PF00011-C).