

For Research Use Only



CoraLite® Plus 488-conjugated Uteroglobulin/CC10 Polyclonal antibody

Catalog Number: CL488-10490

Basic Information

Catalog Number: CL488-10490	GenBank Accession Number: BC004481	Purification Method: Antigen affinity purification
Size: 100ul , Concentration: 1000 µg/ml by Nanodrop;	GeneID (NCBI): 7356	Recommended Dilutions: IF 1:50-1:500
Source: Rabbit	Full Name: secretoglobin, family 1A, member 1 (uteroglobulin)	Excitation/Emission maximum wavelengths: 493 nm / 522 nm
Isotype: IgG	Calculated MW: 10 kDa	
Immunogen Catalog Number: AG0758		

Applications

Tested Applications: IF	Positive Controls: IF : mouse lung tissue, A549 cells
Species Specificity: human, mouse	

Background Information

Uteroglobulin, also known as CC10, is a member of the secretoglobin family of small secreted proteins. It is produced by the nonciliated, nonmucous, secretory epithelial clara cells of the pulmonary airways, was first identified in lung lavage by Singh and colleagues. It has been implicated in numerous functions including anti-inflammation, inhibition of phospholipase A2 and the sequestering of hydrophobic ligands. Defects in this gene are associated with a susceptibility to asthma.

Storage

Storage:
Store at -20°C. Avoid exposure to light. Stable for one year after shipment.
Storage Buffer:
PBS with 50% Glycerol, 0.05% Proclin300, 0.5% BSA, pH 7.3.
Aliquoting is unnecessary for -20°C storage

*** 20ul sizes contain 0.1% BSA

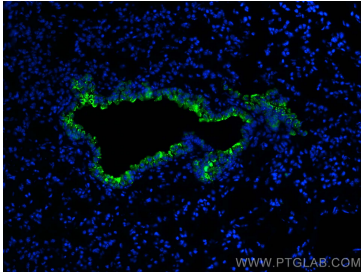
For technical support and original validation data for this product please contact:

T: 1 (888) 4PTGLAB (1-888-478-4522) (toll free in USA), or 1(312) 455-8498 (outside USA)

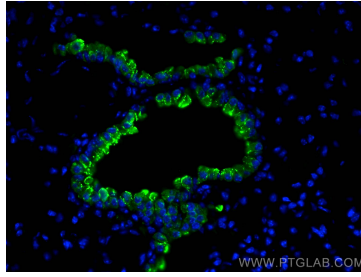
E: proteintech@ptglab.com
W: ptglab.com

This product is exclusively available under Proteintech Group brand and is not available to purchase from any other manufacturer.

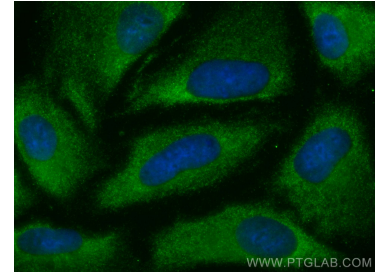
Selected Validation Data



Immunofluorescent analysis of (4% PFA) fixed mouse lung tissue using Coralite® Plus 488 Uteroglobin/CC10 antibody (CL488-10490) at dilution of 1:200.



Immunofluorescent analysis of (4% PFA) fixed mouse lung tissue using Coralite® Plus 488 Uteroglobin/CC10 antibody (CL488-10490) at dilution of 1:200.



Immunofluorescent analysis of (-20°C Methanol) fixed A549 cells using Coralite® Plus 488 Uteroglobin/CC10 antibody (CL488-10490) at dilution of 1:200.