

For Research Use Only

# CoraLite® Plus 488-conjugated NCS1 Polyclonal antibody

Catalog Number: CL488-10506

Featured Product



## Basic Information

Catalog Number:

CL488-10506

Size:

100ul , Concentration: 1000 ug/ml by Nanodrop;

Source:

Rabbit

Isotype:

IgG

Immunogen Catalog Number:

AG0784

GenBank Accession Number:

BC004856

GeneID (NCBI):

23413

UNIPROT ID:

P62166

Full Name:

frequenin homolog (Drosophila)

Calculated MW:

22 kDa

Observed MW:

22 kDa

Purification Method:

Antigen affinity purification

Recommended Dilutions:

WB 1:500-1:1000

Excitation/Emission maxima wavelengths:

493 nm / 522 nm

## Applications

Tested Applications:

WB, FC (Intra)

Species Specificity:

human, mouse, rat

Positive Controls:

WB : mouse brain tissue, rat brain tissue

## Background Information

NCS1 is a member of the neuronal calcium sensor gene family. It regulates G protein-coupled receptor phosphorylation in a calcium-dependent manner and can substitute for calmodulin. The protein is associated with secretory granules and modulates synaptic transmission and synaptic plasticity.

## Storage

Storage:

Store at -20°C. Avoid exposure to light. Stable for one year after shipment.

Storage Buffer:

PBS with 50% Glycerol, 0.05% Proclin300, 0.5% BSA, pH 7.3.

Aliquoting is unnecessary for -20°C storage

For technical support and original validation data for this product please contact:

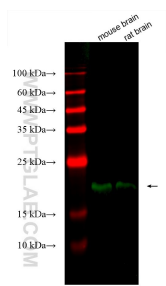
T: 1 (888) 4PTGLAB (1-888-478-4522) (toll free in USA), or 1(312) 455-8498 (outside USA)

E: [proteintech@ptglab.com](mailto:proteintech@ptglab.com)

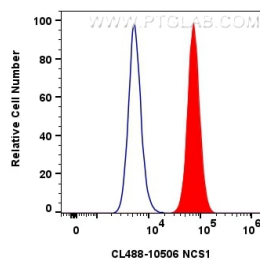
W: [ptglab.com](http://ptglab.com)

This product is exclusively available under Proteintech Group brand and is not available to purchase from any other manufacturer.

## Selected Validation Data



Various lysates were subjected to SDS PAGE followed by western blot with CL488-10506 (NCS1 antibody) at dilution of 1:500 incubated at room temperature for 1.5 hours.



$1 \times 10^6$  SH-SY5Y cells were intracellularly stained with 0.8  $\mu$ g CoraLite® Plus 488 Anti-Human NCS1 (CL488-10506) (red), or 0.8  $\mu$ g CoraLite® Plus 488-conjugated Rabbit IgG control Rabbit PolyAb (CL488-30000, Clone: ) (blue). Cells were fixed with 4% PFA and permeabilized with Flow Cytometry Perm Buffer (PF00011-C).