

For Research Use Only

CoraLite® Plus 488-conjugated Chromogranin A Polyclonal antibody

Catalog Number: CL488-10529

1 Publications



Basic Information

Catalog Number:

CL488-10529

Size:

100ul , Concentration: 1000 ug/ml by Nanodrop;

Source:

Rabbit

Isotype:

IgG

Immunogen Catalog Number:

AG0807

GenBank Accession Number:

BC006459

GeneID (NCBI):

1113

UNIPROT ID:

P10645

Full Name:

chromogranin A (parathyroid secretory protein 1)

Calculated MW:

51 kDa

Purification Method:

Antigen affinity purification

Recommended Dilutions:

IF-P 1:50-1:500

IF/ICC 1:50-1:500

Excitation/Emission maxima wavelengths:

493 nm / 522 nm

Applications

Tested Applications:

IF/ICC, IF-P, FC (Intra)

Cited Applications:

IF

Species Specificity:

human, mouse, rat

Cited Species:

mouse

Positive Controls:

IF-P : mouse pancreas tissue,

IF/ICC : Neuro-2a cells,

Background Information

Chromogranin A is a member of the granin family of neuroendocrine secretory proteins. It is located in secretory vesicles of neurons and endocrine cells. Chromogranin A is the precursor to several functional peptides including vasostatin, pancreastatin, catestatin and parastatin. These peptides negatively modulate the neuroendocrine function of the releasing cell (autocrine) or nearby cells (paracrine). CgA is one of the most used tumor markers in NET's (neuroendocrine tumors), and elevated CgA concentrations have been demonstrated in serum or plasma of patients with different types of these tumors.

Notable Publications

Author	Pubmed ID	Journal	Application
Paige N Spencer	39803424	bioRxiv	IF

Storage

Storage:

Store at -20°C. Avoid exposure to light. Stable for one year after shipment.

Storage Buffer:

PBS with 50% Glycerol, 0.05% Proclin300, 0.5% BSA, pH 7.3.

Aliquoting is unnecessary for -20°C storage

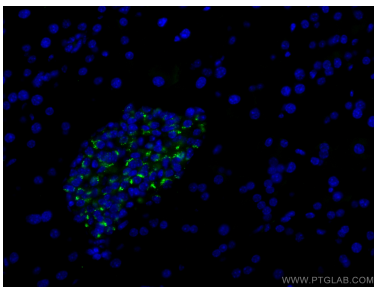
For technical support and original validation data for this product please contact:

T: 1 (888) 4PTGLAB (1-888-478-4522) (toll free in USA), or 1(312) 455-8498 (outside USA)

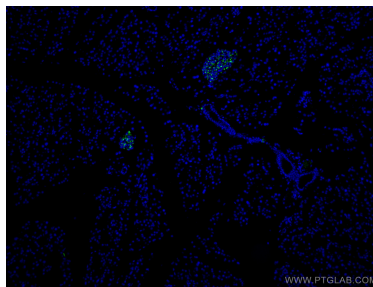
E: proteintech@ptglab.com
W: ptglab.com

This product is exclusively available under Proteintech Group brand and is not available to purchase from any other manufacturer.

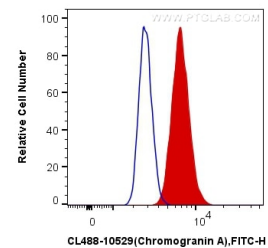
Selected Validation Data



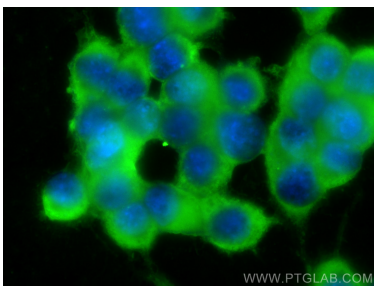
Immunofluorescent analysis of (4% PFA) fixed mouse pancreas tissue using Coralite® Plus 488 Chromogranin A antibody (CL488-10529) at dilution of 1:200.



Immunofluorescent analysis of (4% PFA) fixed mouse pancreas tissue using Coralite® Plus 488 Chromogranin A antibody (CL488-10529) at dilution of 1:200.



1X10⁶ Neuro-2a cells were intracellularly stained with 0.4 ug Coralite® Plus 488 Anti-Human Chromogranin A (CL488-10529) (red), or 0.4 ug Control Antibody. Cells were fixed with 4% PFA and permeabilized with Flow Cytometry Perm Buffer (PF00011-C).



Immunofluorescent analysis of (-20°C Ethanol) fixed Neuro-2a cells using Coralite® Plus 488 Chromogranin A antibody (CL488-10529) at dilution of 1:200.