

For Research Use Only

CoraLite® Plus 488-conjugated Cytokeratin 6A Polyclonal antibody



Catalog Number: CL488-10590

Basic Information

Catalog Number: CL488-10590	GenBank Accession Number: BC008807	Purification Method: Antigen affinity purification
Size: 100ul , Concentration: 1000 µg/ml by Nanodrop;	GeneID (NCBI): 3853	Recommended Dilutions: IF 1:50-1:500
Source: Rabbit	Full Name: keratin 6A	Excitation/Emission maxima wavelengths: 493 nm / 522 nm
Isotype: IgG	Calculated MW: 60 kDa	
Immunogen Catalog Number: AG0882		

Applications

Tested Applications: FC (Intra), IF	Positive Controls: IF : A431 cells,
Species Specificity: human, mouse, rat	

Background Information

Keratins are a large family of proteins that form the intermediate filament cytoskeleton of epithelial cells, which are classified into two major sequence types. Type I keratins are a group of acidic intermediate filament proteins, including K9-K23, and the hair keratins Ha1-Ha8. Type II keratins are the basic or neutral counterparts to the acidic type I keratins, including K1-K8, and the hair keratins, Hb1-Hb6. Keratin 6 is a type II keratin. It is used as marker for epidermal hyperproliferation and differentiation. There are three keratin 6 isoforms: keratin 6A, 6B and 6C. They share more than 99% identical DNA sequence.

Storage

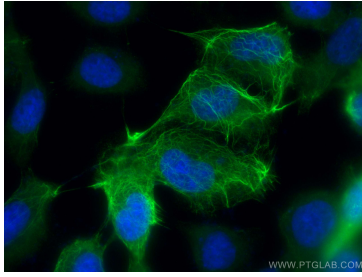
Storage:
Store at -20°C. Avoid exposure to light. Stable for one year after shipment.
Storage Buffer:
PBS with 50% Glycerol, 0.05% Proclin300, 0.5% BSA, pH 7.3.
Aliquoting is unnecessary for -20°C storage

*** 20ul sizes contain 0.1% BSA

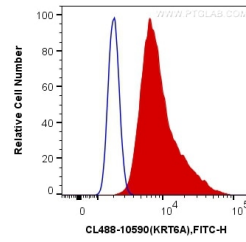
For technical support and original validation data for this product please contact:
T: 1 (888) 4PTGLAB (1-888-478-4522) (toll free in USA), or 1(312) 455-8498 (outside USA)
E: proteintech@ptglab.com
W: ptglab.com

This product is exclusively available under Proteintech Group brand and is not available to purchase from any other manufacturer.

Selected Validation Data



Immunofluorescent analysis of (-20°C Methanol) fixed A431 cells using Coralite® Plus 488 Cytokeratin 6A antibody (CL488-10590) at dilution of 1:200.



1X10⁶ A431 cells were intracellularly stained with 0.4 ug Coralite® Plus 488 Anti-Human Cytokeratin 6A (CL488-10590) (red), or 0.4 ug Control Antibody. Cells were fixed with 4% PFA and permeabilized with Flow Cytometry Perm Buffer (PF00011-C).