

For Research Use Only

# CoraLite® Plus 488-conjugated Cytokeratin 19 Polyclonal antibody

Catalog Number: CL488-10712



## Basic Information

Catalog Number:	GenBank Accession Number:	Purification Method:
CL488-10712	BC007628	Antigen affinity purification
Size:	GeneID (NCBI):	Excitation/Emission maxima wavelengths:
100ul , Concentration: 1000 ug/ml by Nanodrop;	3880	493 nm / 522 nm
Source:	UNIPROT ID:	
Rabbit	P08727	
Isotype:	Full Name:	
IgG	keratin 19	
Immunogen Catalog Number:	Calculated MW:	
AG1085	40 kDa	

## Applications

Tested Applications:  
IF, FC (Intra)

Species Specificity:  
human, mouse

## Background Information

Keratins are a large family of proteins that form the intermediate filament cytoskeleton of epithelial cells. Keratin expression is highly regulated, tissue specific, and varies according to cell-state. Type I keratins consist of acidic, low molecular weight proteins with MW ranging from 40 kDa (KRT19) to 64 kDa (KRT9). Type 2 keratins consist of basic or neutral, high molecular weight proteins with MW from 52 kDa (KRT8) to 67 kDa (KRT18). Keratin 19 is a type I cytokeratin. It is a biochemical marker of skin stem cells in vivo and in vitro.

## Storage

Storage:  
Store at -20°C. Avoid exposure to light. Stable for one year after shipment.

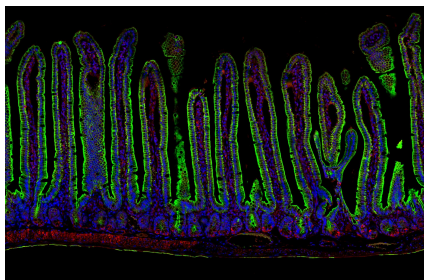
Storage Buffer:  
PBS with 50% Glycerol, 0.05% Proclin300, 0.5% BSA, pH 7.3.

Aliquoting is unnecessary for -20°C storage

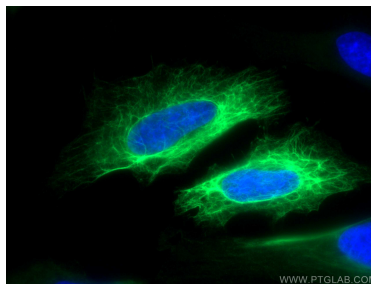
For technical support and original validation data for this product please contact:  
T: 1 (888) 4PTGLAB (1-888-478-4522) (toll free in USA), or 1(312) 455-8498 (outside USA)  
E: [proteintech@ptglab.com](mailto:proteintech@ptglab.com)  
W: [ptglab.com](http://ptglab.com)

This product is exclusively available under Proteintech Group brand and is not available to purchase from any other manufacturer.

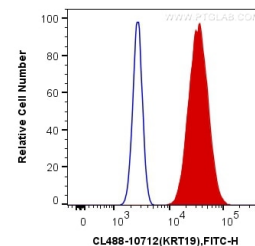
## Selected Validation Data



Adult mouse small intestine stained for Cytokeratin 19 (green, CL488-10712) and BMI1 (red, 10832-1-AP). BMI1 stains intestinal stem cells located at the base of the villi. As these stem cells differentiate into intestinal epithelial cells, they acquire Cytokeratin 19 expression. Cytokeratin 19 was conjugated to Coralite 488. Samples were fixed in 4% PFA, embedded in paraffin, and imaged on a confocal microscope. Image credit: @Immunofluorescence on Instagram.



Immunofluorescent analysis of (-20°C Methanol) fixed HeLa cells using CoraLite® Plus 488 Cytokeratin 19 antibody (CL488-10712) at dilution of 1:200.



1X10<sup>6</sup> MCF-7 cells were intracellularly stained with 0.2 ug CoraLite® Plus 488 Anti-Human Cytokeratin 19 (CL488-10712) (red), or 0.2 ug Control Antibody. Cells were fixed with 4% PFA and permeabilized with Flow Cytometry Perm Buffer (PF00011-C).