

For Research Use Only

CoraLite® Plus 488-conjugated Cytokeratin 18 Polyclonal antibody



Catalog Number:CL488-10830

Basic Information

Catalog Number: CL488-10830	GenBank Accession Number: BC000180	Purification Method: Antigen affinity purification
Size: 100ul , Concentration: 1000 µg/ml by Nanodrop;	GeneID (NCBI): 3875	Recommended Dilutions: WB 1:1000-1:4000 IF 1:50-1:500
Source: Rabbit	Full Name: keratin 18	Excitation/Emission maxima wavelengths: 488 nm / 515 nm
Isotype: IgG	Calculated MW: 48 kDa	
Immunogen Catalog Number: AG1260	Observed MW: 48 kDa	

Applications

Tested Applications: FC (Intra), IF, WB	Positive Controls:
Species Specificity: human, mouse	WB : A431 cells, HeLa cells, K-562 cells, MCF-7 cells IF : HeLa cells, HepG2 cells

Background Information

Keratins are a large family of proteins that form the intermediate filament cytoskeleton of epithelial cells, which are classified into two major sequence types. Type I keratins are a group of acidic intermediate filament proteins, including K9-K23, and the hair keratins Ha1-Ha8. Type II keratins are the basic or neutral counterparts to the acidic type I keratins, including K1-K8, and the hair keratins, Hb1-Hb6. KRT18, also named as CYK18, PIG46 and K18, is the most commonly found members of the intermediate filament gene family. KRT18 is a type I keratin which is found primarily in non squamous epithelia and is present in a majority of adenocarcinomas and ductal carcinomas but not in squamous cell carcinomas.

Storage

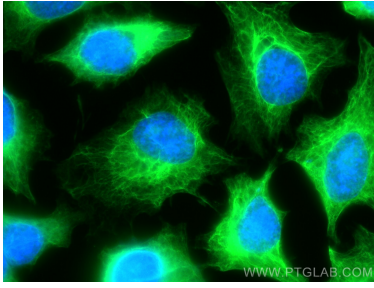
Storage:
Store at -20°C. Avoid exposure to light.
Storage Buffer:
PBS with 50% Glycerol, 0.05% Proclin300, 0.5% BSA, pH 7.3.
Aliquoting is unnecessary for -20°C storage

*** 20ul sizes contain 0.1% BSA

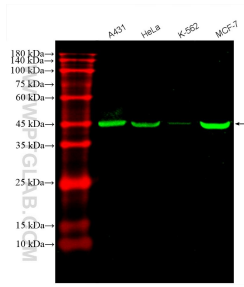
For technical support and original validation data for this product please contact:
T: 1 (888) 4PTGLAB (1-888-478-4522) (toll free in USA), or 1(312) 455-8498 (outside USA) E: proteintech@ptglab.com W: ptglab.com

This product is exclusively available under Proteintech Group brand and is not available to purchase from any other manufacturer.

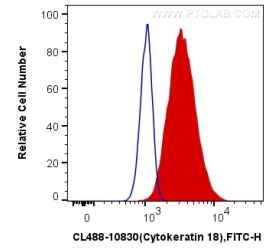
Selected Validation Data



Immunofluorescent analysis of (-20°C Methanol) fixed HeLa cells using CoraLite® Plus 488 Cytokeratin 18 antibody (CL488-10830) at dilution of 1:200.



Various lysates were subjected to SDS PAGE followed by western blot with CL488-10830 (Cytokeratin 18 antibody) at dilution of 1:2000 incubated at room temperature for 1.5 hours.



1X10⁶ HeLa cells were intracellularly stained with 0.4 ug CoraLite® Plus 488 Anti-Human Cytokeratin 18 (CL488-10830) (red), or 0.4 ug Control Antibody. Cells were fixed with 4% PFA and permeabilized with Flow Cytometry Perm Buffer (PF00011-C).