

For Research Use Only

# CoraLite® Plus 488-conjugated Myosin Light Chain 2/MLC-2V Polyclonal antibody



Catalog Number: CL488-10906

1 Publications

## Basic Information

Catalog Number:

CL488-10906

Size:

100ul , Concentration: 1000 ug/ml by Nanodrop;

Source:

Rabbit

Isotype:

IgG

Immunogen Catalog Number:

AG1356

GenBank Accession Number:

BC015821

GeneID (NCBI):

4633

UNIPROT ID:

P10916

Full Name:

myosin, light chain 2, regulatory, cardiac, slow

Calculated MW:

19 kDa

Observed MW:

19 kDa

Purification Method:

Antigen affinity purification

Recommended Dilutions:

IF-P 1:50-1:500

Excitation/Emission maxima wavelengths:

493 nm / 522 nm

## Applications

Tested Applications:

IF-P

Cited Applications:

IF

Species Specificity:

human, mouse, rat, zebrafish

Cited Species:

human

Positive Controls:

IF-P: mouse heart tissue,

## Background Information

MYL2, also named as MLC-2v and MLC-2, is ventricular/cardiac muscle isoform. Defects in MYL2 are the cause of cardiomyopathy familial hypertrophic type 10 (CMH10). Defects in MYL2 are the cause of cardiomyopathy familial hypertrophic with mid-left ventricular chamber type 2 (MVC2). MYL2 has been widely used as a marker of mature ventricular cardiomyocytes. There are four genes of myosin light chain 2 (MLC2): MYL2 (MLC2v), MYL5, MYL7 (MLC2a) and MYL9 (MLC2c). While usually myosin light chain 2 is referred to MYL2.

## Notable Publications

Author	Pubmed ID	Journal	Application
WeiQi Zeng	37381027	Cell Commun Signal	IF

## Storage

Storage:

Store at -20°C. Avoid exposure to light. Stable for one year after shipment.

Storage Buffer:

PBS with 50% Glycerol, 0.05% Proclin300, 0.5% BSA, pH 7.3.

Aliquoting is unnecessary for -20°C storage

For technical support and original validation data for this product please contact:

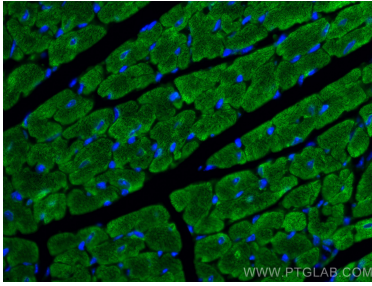
T: 1 (888) 4PTGLAB (1-888-478-4522) (toll free in USA), or 1(312) 455-8498 (outside USA)

E: [proteintech@ptglab.com](mailto:proteintech@ptglab.com)  
W: [ptglab.com](http://ptglab.com)

This product is exclusively available under Proteintech Group brand and is not available to purchase from any other manufacturer.

---

## Selected Validation Data



Immunofluorescent analysis of (4% PFA) fixed mouse heart tissue using CoraLite® Plus 488 Myosin Light Chain 2/MLC-2V antibody (CL488-10906) at dilution of 1:200.