

For Research Use Only

# CoraLite® Plus 488-conjugated MYL3 Polyclonal antibody

Catalog Number: CL488-10913



## Basic Information

Catalog Number:

CL488-10913

Size:

100ul , Concentration: 1000 ug/ml by 4634

Nanodrop;

Source:

Rabbit

Isotype:

IgG

Immunogen Catalog Number:

AG1364

GenBank Accession Number:

BC009790

GeneID (NCBI):

4634

UNIPROT ID:

P08590

Full Name:

myosin, light chain 3, alkali;

ventricular, skeletal, slow

Calculated MW:

22 kDa

Observed MW:

22-27 kDa

Purification Method:

Antigen affinity purification

Recommended Dilutions:

IF/ICC 1:50-1:500

Excitation/Emission maxima

wavelengths:

493 nm / 522 nm

## Applications

Tested Applications:

IF/ICC, FC (Intra)

Species Specificity:

human, mouse, rat

Positive Controls:

IF/ICC : C2C12 cells,

## Background Information

MYL3, also named as MLC1v, is an essential light chain of myosin that is associated with muscle contraction. It is expressed in ventricular and slow skeletal muscle. MYL3 may serve as a target for caspase-3 in dying cardiomyocytes. Mutations of MYL3 gene cause hypertrophic cardiomyopathy. MYL3 has been identified as potential serum biomarker for drug induced myotoxicity. Great increase in MYL3 serum concentration has been observed in rats with cardiac and skeletal muscle injury. (PMID:21685905)

## Storage

Storage:

Store at -20°C. Avoid exposure to light. Stable for one year after shipment.

Storage Buffer:

PBS with 50% Glycerol, 0.05% Proclin300, 0.5% BSA, pH 7.3.

Aliquoting is unnecessary for -20°C storage

For technical support and original validation data for this product please contact:

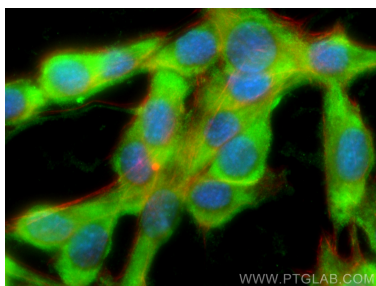
T: 1 (888) 4PTGLAB (1-888-478-4522) (toll free in USA), or 1(312) 455-8498 (outside USA)

E: [proteintech@ptglab.com](mailto:proteintech@ptglab.com)

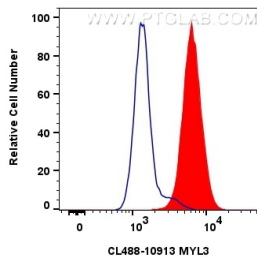
W: [ptglab.com](http://ptglab.com)

This product is exclusively available under Proteintech Group brand and is not available to purchase from any other manufacturer.

## Selected Validation Data



Immunofluorescent analysis of (-20°C Ethanol) fixed C2C12 cells using Coralite® Plus 488 MYL3 antibody (CL488-10913) at dilution of 1:200, CL594-Phalloidin (red).



1x10<sup>6</sup> C2C12 cells were intracellularly stained with 0.8 ug Coralite® Plus 488 Myl3 Polyclonal Antibody (CL488-10913)(red), or 0.8 ug Coralite® Plus 488-conjugated Rabbit IgG control Rabbit PolyAb (CL488-30000) (blue). Cells were fixed with 4% PFA and permeabilized with Flow Cytometry Perm Buffer (PF00011-C).