

For Research Use Only

CoraLite® Plus 488-conjugated CRH/CRF Polyclonal antibody

Catalog Number: CL488-10944



Basic Information

Catalog Number:

CL488-10944

Size:

100ul , Concentration: 1000 ug/ml by Nanodrop;

Source:

Rabbit

Isotype:

IgG

Immunogen Catalog Number:

AG1371

GenBank Accession Number:

BC011031

GeneID (NCBI):

1392

UNIPROT ID:

P06850

Full Name:

CRH/CRF

Calculated MW:

21 kDa

Observed MW:

35-38 kDa

Purification Method:

Antigen affinity purification

Recommended Dilutions:

IF-P 1:50-1:500

Excitation/Emission maxima wavelengths:

493 nm / 522 nm

Applications

Tested Applications:

IF-P

Species Specificity:

human, mouse, rat

Positive Controls:

IF-P : mouse brain tissue,

Background Information

CRH, also called CRF or corticotiberin, is a peptide hormone and neurotransmitter involved in the stress response. Marked reduction in this protein has been observed in association with Alzheimer disease. In addition to production in the hypothalamus, this protein is also synthesized in peripheral tissues, such as T lymphocytes and is highly expressed in the placenta. In the placenta it is a marker that determines the length of gestation and the timing of parturition and delivery.

Storage

Storage:

Store at -20°C. Avoid exposure to light. Stable for one year after shipment.

Storage Buffer:

PBS with 50% Glycerol, 0.05% Proclin300, 0.5% BSA, pH 7.3.

Aliquoting is unnecessary for -20°C storage

For technical support and original validation data for this product please contact:

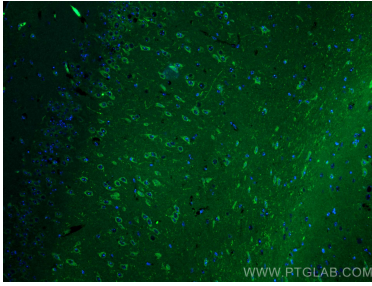
T: 1 (888) 4PTGLAB (1-888-478-4522) (toll free in USA), or 1(312) 455-8498 (outside USA)

E: proteintech@ptglab.com

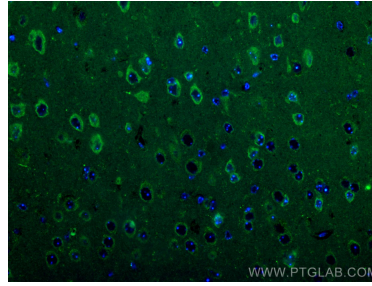
W: ptglab.com

This product is exclusively available under Proteintech Group brand and is not available to purchase from any other manufacturer.

Selected Validation Data



Immunofluorescent analysis of (4% PFA) fixed mouse brain tissue using Coralite® Plus 488 CRH/CRF antibody (CL488-10944) at dilution of 1:200.



Immunofluorescent analysis of (4% PFA) fixed mouse brain tissue using Coralite® Plus 488 CRH/CRF antibody (CL488-10944) at dilution of 1:200.