

For Research Use Only

# CoraLite® Plus 488-conjugated SUB1 Polyclonal antibody

Catalog Number: CL488-10948

Featured Product



## Basic Information

Catalog Number:

CL488-10948

Size:

100ul, Concentration: 1000 ug/ml by Nanodrop;

Source:

Rabbit

Isotype:

IgG

Immunogen Catalog Number:

AG1390

GenBank Accession Number:

BC009610

GeneID (NCBI):

10923

UNIPROT ID:

P53999

Full Name:

SUB1 homolog (S. cerevisiae)

Calculated MW:

14 kDa

Observed MW:

18-23 kDa

Purification Method:

Antigen affinity purification

Recommended Dilutions:

IF/ICC 1:50-1:500

Excitation/Emission maxima wavelengths:

493 nm / 522 nm

## Applications

Tested Applications:

IF/ICC

Species Specificity:

human

Positive Controls:

IF/ICC : HeLa cells,

## Background Information

SUB1 gene encodes activated RNA polymerase II transcriptional coactivator p15, also termed as positive cofactor 4 (PC4) or p14. SUB1 is a sort of general coactivator that functions in assembling and stabilization of transcription complex. It has DNA binding activity and is localized in the nucleus, multiple modification sites of phosphorylation or acetylation may turn it appear slightly shifted molecular weight. Catalog#10948-2-AP is a rabbit polyclonal antibody raised against full-length human SUB1. This antibody recognize 14-16 kDa (P14 or P15), 20 kDa(phospho form) and 30 kDa (Dimer form).

## Storage

Storage:

Store at -20°C. Avoid exposure to light. Stable for one year after shipment.

Storage Buffer:

PBS with 50% Glycerol, 0.05% Proclin300, 0.5% BSA, pH 7.3.

Aliquoting is unnecessary for -20°C storage

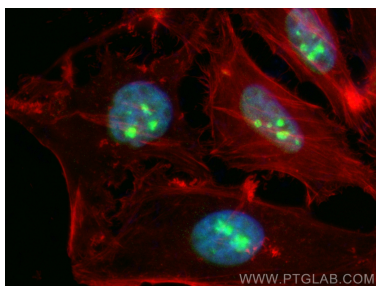
For technical support and original validation data for this product please contact:

T: 1 (888) 4PTGLAB (1-888-478-4522) (toll free in USA), or 1(312) 455-8498 (outside USA)

E: [proteintech@ptglab.com](mailto:proteintech@ptglab.com)  
W: [ptglab.com](http://ptglab.com)

This product is exclusively available under Proteintech Group brand and is not available to purchase from any other manufacturer.

## Selected Validation Data



Immunofluorescent analysis of (4% PFA) fixed HeLa cells using CoraLite® Plus 488 SUB1 antibody (CL488-10948) at dilution of 1:200, CL594-Phalloidin (red).