

For Research Use Only

CoraLite® Plus 488-conjugated SUMF2 Polyclonal antibody



Catalog Number: **CL488-11210**

Basic Information

Catalog Number: CL488-11210	GenBank Accession Number: BC015600	Purification Method: Antigen affinity purification
Size: 100ul , Concentration: 1000 µg/ml by Nanodrop;	GeneID (NCBI): 25870	Recommended Dilutions: IF 1:50-1:500
Source: Rabbit	UNIPROT ID: Q8NBJ7	Excitation/Emission maxima wavelengths: 493 nm / 522 nm
Isotype: IgG	Full Name: sulfatase modifying factor 2	
Immunogen Catalog Number: AG1711	Calculated MW: 34 kDa	
	Observed MW: 34 kDa	

Applications

Tested Applications: IF	Positive Controls: IF : A431 cells,
Species Specificity: human, mouse, rat	

Storage

Storage:
Store at -20°C. Avoid exposure to light. Stable for one year after shipment.
Storage Buffer:
PBS with 50% Glycerol, 0.05% Proclin300, 0.5% BSA, pH 7.3.
Aliquoting is unnecessary for -20°C storage

***** 20ul sizes contain 0.1% BSA**

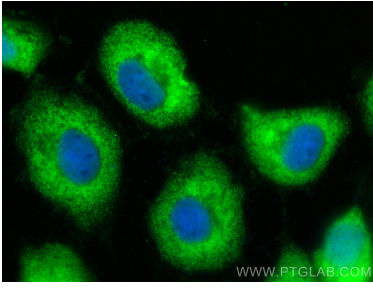
For technical support and original validation data for this product please contact:

T: 1 (888) 4PTGLAB (1-888-478-4522) (toll free
in USA), or 1(312) 455-8498 (outside USA)

E: proteintech@ptglab.com
W: ptglab.com

**This product is exclusively available under Proteintech
Group brand and is not available to purchase from any
other manufacturer.**

Selected Validation Data



Immunofluorescent analysis of (-20°C Ethanol) fixed A431 cells using CoraLite® Plus 488 SUMF2 antibody (CL488-11210) at dilution of 1:200.