

For Research Use Only

CoraLite® Plus 488-conjugated SUMO2/3 Polyclonal antibody



Catalog Number: CL488-11251

Featured Product

Basic Information

Catalog Number: CL488-11251	GenBank Accession Number: BC016775	Purification Method: Antigen Affinity Purified
Size: 100ul , Concentration: 1000 µg/ml by Nanodrop;	GeneID (NCBI): 6613	Recommended Dilutions: IF 1:50-1:500
Source: Rabbit	Full Name: SMT3 suppressor of mif two 3 homolog 2 (S. cerevisiae)	Excitation/Emission maximum wavelengths: 493 nm / 522 nm
Isotype: IgG	Calculated MW: 11 kDa	
Immunogen Catalog Number: AG1778	Observed MW: 11-20 kDa	

Applications

Tested Applications: IF	Positive Controls: IF : HEK-293 cells,
Species Specificity: human, mouse, rat	

Background Information

Ubiquitin is most famous for its function in targeting proteins for degradation by the 26S proteasome, ubiquitin needs to be attached to a substrate in chains (polyubiquitylation) before being recognized by proteasome. Similarly, SUMO (small ubiquitin-related modifier) can be linked to substrates in chains (polysumoylation), SUMO modification has been implicated in many important cellular processes including the control of genome stability, signal transduction, targeting to and formation of nuclear compartments, cell cycle and meiosis. There are 4 confirmed SUMO isoforms in human, SUMO-1, SUMO-2, SUMO-3 and SUMO-4. SUMO-2 and SUMO-3 are nearly identical but are distinct from SUMO-1. SUMO2/3 conjugation was recently widely involved in neuroprotective activities. A substitution (M55V) of SUMO4 was strongly associated with the pathogenesis of type 1 diabetes (T1D) involving NF kappa B related mechanisms.

Storage

Storage:
Store at -20°C. Avoid exposure to light. Stable for one year after shipment.
Storage Buffer:
PBS with 50% Glycerol, 0.05% Proclin300, 0.5% BSA, pH 7.3.
Aliquoting is unnecessary for -20°C storage

*** 20ul sizes contain 0.1% BSA

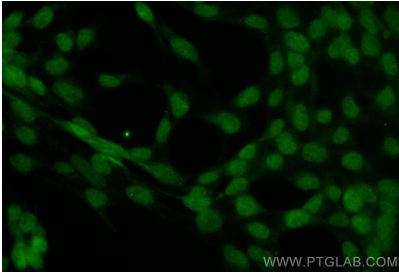
For technical support and original validation data for this product please contact:

T: 1 (888) 4PTGLAB (1-888-478-4522) (toll free in USA), or 1(312) 455-8498 (outside USA)

E: proteintech@ptglab.com
W: ptglab.com

This product is exclusively available under Proteintech Group brand and is not available to purchase from any other manufacturer.

Selected Validation Data



Immunofluorescent analysis of (4% PFA) fixed HEK-293 cells using CoraLite® Plus 488 SUMO2/3 antibody (CL488-11251) at dilution of 1:200.