

For Research Use Only

# CoraLite® Plus 488-conjugated ATG3 Polyclonal antibody

Catalog Number: CL488-11262



## Basic Information

### Catalog Number:

CL488-11262

### Size:

100ul , Concentration: 1000 ug/ml by Nanodrop;

### Source:

Rabbit

### Isotype:

IgG

### Immunogen Catalog Number:

AG1785

### GenBank Accession Number:

BC024221

### GeneID (NCBI):

64422

### UNIPROT ID:

Q9NT62

### Full Name:

ATG3 autophagy related 3 homolog (S. cerevisiae)

### Calculated MW:

36 kDa

### Observed MW:

36-40 kDa

### Purification Method:

Antigen affinity purification

### Recommended Dilutions:

IF/ICC 1:50-1:500

### Excitation/Emission maxima wavelengths:

493 nm / 522 nm

## Applications

### Tested Applications:

IF/ICC

### Species Specificity:

human, mouse, rat

### Positive Controls:

IF/ICC : HEK-293 cells,

## Background Information

Autophagy is a lysosome-dependent conserved catabolic process in response to various stresses, such as oxidative stress and ischemia, for the degradation and recycling of aged or dysfunctional intracellular components and damaged organelles. A large group of autophagy-related genes (ATGs) have been identified as essential drivers in different stages of autophagy. Autophagy-related 3 (ATG3), one of the autophagy-related gene family members, serves as an E2-like enzyme contributing to the conjugation of microtubule-associated protein light chain 3 (LC3) to lipid phosphatidylethanolamine (PE). ATG3 plays a significant role in the regulation of autophagy, viability, and death.

## Storage

### Storage:

Store at -20°C. Avoid exposure to light. Stable for one year after shipment.

### Storage Buffer:

PBS with 50% Glycerol, 0.05% Proclin300, 0.5% BSA, pH 7.3.

Aliquoting is unnecessary for -20°C storage

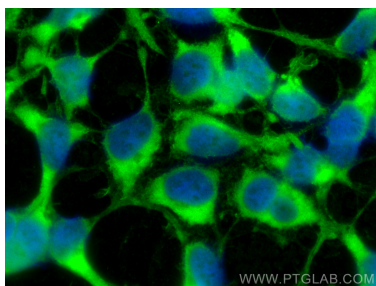
For technical support and original validation data for this product please contact:

T: 1 (888) 4PTGLAB (1-888-478-4522) (toll free in USA), or 1(312) 455-8498 (outside USA)

E: [proteintech@ptglab.com](mailto:proteintech@ptglab.com)  
W: [ptglab.com](http://ptglab.com)

This product is exclusively available under Proteintech Group brand and is not available to purchase from any other manufacturer.

## Selected Validation Data



Immunofluorescent analysis of (-20°C Ethanol)  
fixed HEK-293 cells using CoraLite® Plus 488 ATG3  
antibody (CL488-11262) at dilution of 1:200.