

For Research Use Only

# CoraLite® Plus 488-conjugated UMP/CMP kinase Polyclonal antibody

Catalog Number: CL488-11360



## Basic Information

<b>Catalog Number:</b> CL488-11360	<b>GenBank Accession Number:</b> BC014961	<b>Purification Method:</b> Antigen affinity purification
<b>Size:</b> 100ul , Concentration: 1000 ug/ml by Nanodrop;	<b>GeneID (NCBI):</b> 51727	<b>Recommended Dilutions:</b> IF/ICC 1:50-1:500
<b>Source:</b> Rabbit	<b>UNIPROT ID:</b> P30085	<b>Excitation/Emission maxima wavelengths:</b> 493 nm / 522 nm
<b>Isotype:</b> IgG	<b>Full Name:</b> cytidine monophosphate (UMP-CMP) kinase 1, cytosolic	
<b>Immunogen Catalog Number:</b> AG1920	<b>Calculated MW:</b> 228 aa, 26 kDa	
	<b>Observed MW:</b> 22-26 kDa	

## Applications

<b>Tested Applications:</b> IF/ICC	<b>Positive Controls:</b> IF/ICC : HeLa cells,
<b>Species Specificity:</b> human, mouse, rat	

## Background Information

Pyrimidine nucleoside monophosphate kinase [UMP/CMP kinase (UMP/CMK)] (CMK1) is also named as CMK, CMK1, UCK, UCK1, UCK2, UCK3 and belongs to the adenylate kinase family. It plays a crucial role in the formation of UDP, CDP, and dCDP, which are required for cellular nucleic acid synthesis (PMID:11912132). CMK1 can use a broad spectrum of phosphate donors but the best phosphate donors are ATP and dATP. CMK1 has been reported as a prognostic marker for non-small cell lung cancer, pancreatic cancer and breast cancer (PMID: 21642870, 22838950, 27558661). The longest deduced protein contains 228 amino acids and has a calculated molecular mass of 26 kDa. However, translation likely begins at the second initiation methionine, resulting in a protein of 196 amino acids (PMID:10462544). The shorter form is the endogenously translated protein (PMID:11912132). CMK1 has 3 isoforms with the molecular mass of 22, 16 and 26 kDa.

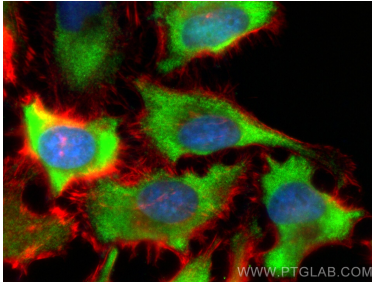
## Storage

**Storage:**  
Store at -20°C. Avoid exposure to light. Stable for one year after shipment.  
**Storage Buffer:**  
PBS with 50% Glycerol, 0.05% Proclin300, 0.5% BSA, pH 7.3.  
**Aliquoting is unnecessary for -20°C storage**

For technical support and original validation data for this product please contact:  
T: 1 (888) 4PTGLAB (1-888-478-4522) (toll free in USA), or 1(312) 455-8498 (outside USA)  
E: [proteintech@ptglab.com](mailto:proteintech@ptglab.com)  
W: [ptglab.com](http://ptglab.com)

This product is exclusively available under Proteintech Group brand and is not available to purchase from any other manufacturer.

## Selected Validation Data



Immunofluorescent analysis of (-20°C Ethanol)  
fixed HeLa cells using CoraLite® Plus 488  
UMP/CMP kinase antibody (CL488-11360) at  
dilution of 1:200, CL594-Phalloidin (red).