

For Research Use Only

# CoraLite® Plus 488-conjugated IgA Heavy Chain Polyclonal antibody

Catalog Number: CL488-11449



## Basic Information

<b>Catalog Number:</b> CL488-11449	<b>GenBank Accession Number:</b> BC016369	<b>Purification Method:</b> Antigen affinity purification
<b>Size:</b> 100ul , Concentration: 1000 ug/ml by Nanodrop;	<b>GeneID (NCBI):</b> 3493	<b>Recommended Dilutions:</b> IF-P 1:50-1:500
<b>Source:</b> Rabbit	<b>Full Name:</b> immunoglobulin heavy constant alpha 1	<b>Excitation/Emission maxima wavelengths:</b> 493 nm / 522 nm
<b>Isotype:</b> IgG	<b>Calculated MW:</b> 496 aa, 53 kDa	
<b>Immunogen Catalog Number:</b> AG2007	<b>Observed MW:</b> 53 kDa	

## Applications

<b>Tested Applications:</b> IF-P	<b>Positive Controls:</b> IF-P : human tonsillitis tissue,
<b>Species Specificity:</b> human	

## Background Information

Ig alpha is the major immunoglobulin class in body secretions. It may serve both to defend against local infection and to prevent access of foreign antigens to the general immunologic system. This antibody recognizes the Chain C region of human Ig alpha-1 (IGHA1).

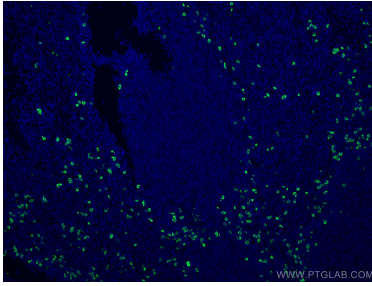
## Storage

**Storage:**  
Store at -20°C. Avoid exposure to light. Stable for one year after shipment.  
**Storage Buffer:**  
PBS with 50% Glycerol, 0.05% Proclin300, 0.5% BSA, pH 7.3.  
**Aliquoting is unnecessary for -20°C storage**

For technical support and original validation data for this product please contact:  
T: 1 (888) 4PTGLAB (1-888-478-4522) (toll free in USA), or 1(312) 455-8498 (outside USA)  
E: [proteintech@ptglab.com](mailto:proteintech@ptglab.com)  
W: [ptglab.com](http://ptglab.com)

This product is exclusively available under Proteintech Group brand and is not available to purchase from any other manufacturer.

## Selected Validation Data



Immunofluorescent analysis of (4% PFA) fixed human tonsillitis tissue using CoraLite® Plus 488 Human IgA Heavy Chain antibody (CL488-11449) at dilution of 1:200.