

For Research Use Only

# CoraLite® Plus 488-conjugated MED15 Polyclonal antibody

Catalog Number: CL488-11566

Featured Product



## Basic Information

### Catalog Number:

CL488-11566

### Size:

100ul, Concentration: 1000 ug/ml by Nanodrop;

### Source:

Rabbit

### Isotype:

IgG

### Immunogen Catalog Number:

AG2143

### GenBank Accession Number:

BC017110

### GeneID (NCBI):

51586

### UNIPROT ID:

Q96RN5

### Full Name:

mediator complex subunit 15

### Calculated MW:

788 aa, 87 kDa

### Observed MW:

105 kDa

### Purification Method:

Antigen affinity purification

### Recommended Dilutions:

IF/ICC 1:50-1:500

### Excitation/Emission maxima wavelengths:

493 nm / 522 nm

## Applications

### Tested Applications:

IF/ICC

### Species Specificity:

human

### Positive Controls:

IF/ICC : SH-SY5Y cells,

## Background Information

MED15, also named as TIG1, CAG7A, CTG7A, PCQAP, TIG-1, TNRC7 and ARC105, is a subunit of the multiprotein complexes PC2 and ARC/DRIP and may function as a transcriptional coactivator in RNA polymerase II transcription. It contains stretches of trinucleotide repeats and is located in the chromosome 22 region which is deleted in DiGeorge syndrome. MED15 is recruited to promoters by direct interaction with gene-specific regulatory proteins. It is about 105kd in SDS-page([doi.org/10.3109/10409238.2013.840259](https://doi.org/10.3109/10409238.2013.840259)).

## Storage

### Storage:

Store at -20°C. Avoid exposure to light. Stable for one year after shipment.

### Storage Buffer:

PBS with 50% Glycerol, 0.05% Proclin300, 0.5% BSA, pH 7.3.

Aliquoting is unnecessary for -20°C storage

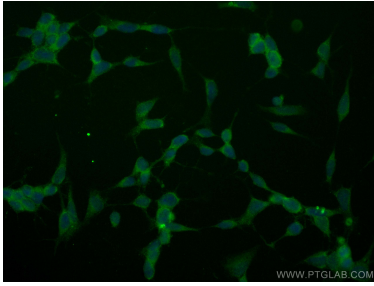
For technical support and original validation data for this product please contact:

T: 1 (888) 4PTGLAB (1-888-478-4522) (toll free in USA), or 1(312) 455-8498 (outside USA)

E: [proteintech@ptglab.com](mailto:proteintech@ptglab.com)  
W: [ptglab.com](http://ptglab.com)

This product is exclusively available under Proteintech Group brand and is not available to purchase from any other manufacturer.

## Selected Validation Data



Immunofluorescent analysis of (-20°C Ethanol)  
fixed SH-SY5Y cells using CoraLite® Plus 488  
MED15 antibody (CL488-11566) at dilution of 1:100.