

For Research Use Only

CoraLite® Plus 488-conjugated SRP68 Polyclonal antibody

Catalog Number:CL488-11585



Basic Information

Catalog Number:

CL488-11585

Size:

100ul , Concentration: 1000 ug/ml by Nanodrop;

Source:

Rabbit

Isotype:

IgG

Immunogen Catalog Number:

AG2177

GenBank Accession Number:

BC020238

GeneID (NCBI):

6730

UNIPROT ID:

Q9UHB9

Full Name:

signal recognition particle 68kDa

Calculated MW:

68 kDa

Observed MW:

68 kDa

Purification Method:

Antigen affinity purification

Recommended Dilutions:

IF/ICC 1:50-1:500

Excitation/Emission maxima wavelengths:

493 nm / 522 nm

Applications

Tested Applications:

IF/ICC

Species Specificity:

human, mouse, rat

Positive Controls:

IF/ICC : HepG2 cells,

Background Information

The signal recognition particle (SRP) is a ribonucleoprotein complex that mediates the targeting of secretory proteins to the rough endoplasmic reticulum (ER) membrane. This ribonucleoprotein complex might interact directly with the docking protein in the ER membrane and possibly participate in the elongation arrest function. SRP68 is one component of the ribonucleoprotein complex, and forms a heterodimer with SRP72.

Storage

Storage:

Store at -20°C. Avoid exposure to light. Stable for one year after shipment.

Storage Buffer:

PBS with 50% Glycerol, 0.05% Proclin300, 0.5% BSA, pH 7.3.

Aliquoting is unnecessary for -20°C storage

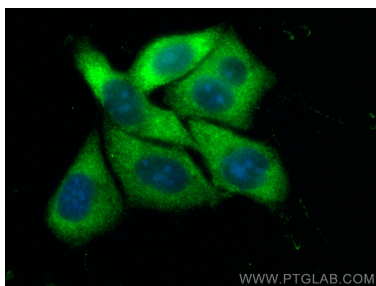
For technical support and original validation data for this product please contact:

T: 1 (888) 4PTGLAB (1-888-478-4522) (toll free in USA), or 1(312) 455-8498 (outside USA)

E: proteintech@ptglab.com
W: ptglab.com

This product is exclusively available under Proteintech Group brand and is not available to purchase from any other manufacturer.

Selected Validation Data



Immunofluorescent analysis of (-20°C Ethanol)
fixed HepG2 cells using Coralite® Plus 488 SRP68
antibody (CL488-11585) at dilution of 1:200.