

For Research Use Only

# CoraLite® Plus 488-conjugated RAB1A Polyclonal antibody

Catalog Number:CL488-11671

Featured Product



## Basic Information

### Catalog Number:

CL488-11671

### Size:

100ul , Concentration: 1000 ug/ml by Nanodrop;

### Source:

Rabbit

### Isotype:

IgG

### Immunogen Catalog Number:

AG2264

### GenBank Accession Number:

BC000905

### GeneID (NCBI):

5861

### UNIPROT ID:

P62820

### Full Name:

RAB1A, member RAS oncogene family

### Calculated MW:

205 aa, 23 kDa

### Observed MW:

23 kDa

### Purification Method:

Antigen affinity purification

### Recommended Dilutions:

IF/ICC 1:200-1:800

### Excitation/Emission maxima wavelengths:

493 nm / 522 nm

## Applications

### Tested Applications:

IF/ICC

### Species Specificity:

human, mouse, rat

### Positive Controls:

IF/ICC : NIH/3T3 cells,

## Background Information

Rab1A is a member of the Rab family of small GTPases with a well characterized function in the regulation of vesicle trafficking from the endoplasmic reticulum to the Golgi apparatus and within Golgi compartments. Rab1A has recently been reported an mTORC1 activator and a colorectal oncogene (Janice D. Thomas. et al. 2014. Cancer cell).

## Storage

### Storage:

Store at -20°C. Avoid exposure to light. Stable for one year after shipment.

### Storage Buffer:

PBS with 50% Glycerol, 0.05% Proclin300, 0.5% BSA, pH 7.3.

Aliquoting is unnecessary for -20°C storage

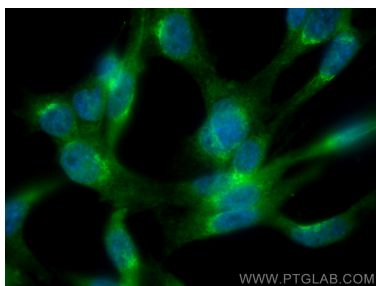
For technical support and original validation data for this product please contact:

T: 1 (888) 4PTGLAB (1-888-478-4522) (toll free in USA), or 1(312) 455-8498 (outside USA)

E: [proteintech@ptglab.com](mailto:proteintech@ptglab.com)  
W: [ptglab.com](http://ptglab.com)

This product is exclusively available under Proteintech Group brand and is not available to purchase from any other manufacturer.

## Selected Validation Data



Immunofluorescent analysis of (4% PFA) fixed NIH/3T3 cells using Coralite® Plus 488 RAB1A antibody (CL488-11671) at dilution of 1:400.