

For Research Use Only

# CoraLite® Plus 488-conjugated TPX2 Polyclonal antibody

Catalog Number: CL488-11741

Featured Product



## Basic Information

Catalog Number:

CL488-11741

Size:

100ul , Concentration: 1000 ug/ml by  
Nanodrop;

Source:

Rabbit

Isotype:

IgG

Immunogen Catalog Number:

AG2334

GenBank Accession Number:

BC020207

GeneID (NCBI):

22974

UNIPROT ID:

Q9ULW0

Full Name:

TPX2, microtubule-associated,  
homolog (Xenopus laevis)

Calculated MW:

747 aa, 86 kDa

Observed MW:

100 kDa

Purification Method:

Antigen affinity purification

Recommended Dilutions:

IF/ICC 1:50-1:500

Excitation/Emission maxima  
wavelengths:

493 nm / 522 nm

## Applications

Tested Applications:

IF/ICC

Species Specificity:

human, mouse, rat

Positive Controls:

IF/ICC : HepG2 cells, HeLa cells

## Background Information

TPX2, also known as DIL2, p10, is a microtubule organization- and cell cycle-associated protein. In the early stage of mitosis, TPX2 is released in a RanGTP-dependent manner and plays a significant role in mitotic spindle formation and subsequent proper segregation of chromosomes during cell division. Furthermore, during interphase, TPX2 is involved in DNA damage response by regulation of  $\gamma$ -H2AX signals (PMID: 25914189). Aberrant expression of TPX2 leads to improper spindle assembly and chromosomal instability. Overexpressed in cancers, TPX2 is being established as the marker for the diagnosis and prognosis of malignancies (PMID: 24556998).

## Storage

Storage:

Store at -20°C. Avoid exposure to light. Stable for one year after shipment.

Storage Buffer:

PBS with 50% Glycerol, 0.05% Proclin300, 0.5% BSA, pH 7.3.

Aliquoting is unnecessary for -20°C storage

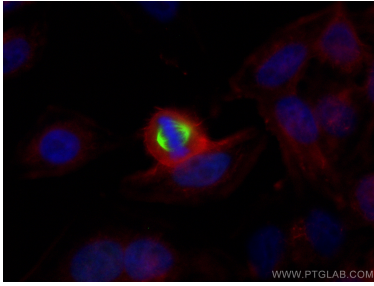
For technical support and original validation data for this product please contact:

T: 1 (888) 4PTGLAB (1-888-478-4522) (toll free  
in USA), or 1(312) 455-8498 (outside USA)

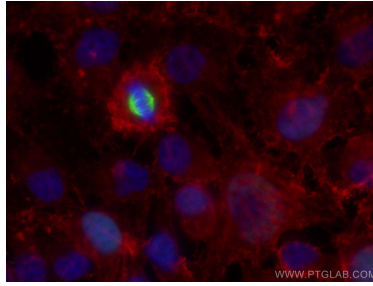
E: [proteintech@ptglab.com](mailto:proteintech@ptglab.com)  
W: [ptglab.com](http://ptglab.com)

This product is exclusively available under Proteintech Group brand and is not available to purchase from any other manufacturer.

## Selected Validation Data



Immunofluorescent analysis of (4% PFA) fixed HepG2 cells using CoraLite® Plus 488 TPX2 antibody (CL488-11741) at dilution of 1:200, CL594-Phalloidin (red).



Immunofluorescent analysis of (4% PFA) fixed HeLa cells using CoraLite® Plus 488 TPX2 antibody (CL488-11741) at dilution of 1:200, CL594-Phalloidin (red).