

For Research Use Only

# CoraLite® Plus 488-conjugated RAB10 Polyclonal antibody

Catalog Number: CL488-11808

Featured Product



## Basic Information

### Catalog Number:

CL488-11808

### Size:

100ul , Concentration: 1000 ug/ml by Nanodrop;

### Source:

Rabbit

### Isotype:

IgG

### Immunogen Catalog Number:

AG2473

### GenBank Accession Number:

BC000896

### GeneID (NCBI):

10890

### UNIPROT ID:

P61026

### Full Name:

RAB10, member RAS oncogene family

### Calculated MW:

200 aa, 23 kDa

### Observed MW:

23 kDa

### Purification Method:

Antigen affinity purification

### Recommended Dilutions:

IF/ICC 1:50-1:500

### Excitation/Emission maxima wavelengths:

493 nm / 522 nm

## Applications

### Tested Applications:

IF/ICC

### Species Specificity:

human, mouse, rat, Canine

### Positive Controls:

IF/ICC : NIH/3T3 cells, MCF-7 cells

## Background Information

RAB10 belongs to the RAS superfamily of small GTPases. RAB10 localizes to a system of tubules and vesicles, and it may be involved in vesicular trafficking and neurotransmitter release. It is also associated with Glut4 translocation in adipocytes.

## Storage

### Storage:

Store at -20°C. Avoid exposure to light. Stable for one year after shipment.

### Storage Buffer:

PBS with 50% Glycerol, 0.05% Proclin300, 0.5% BSA, pH 7.3.

Aliquoting is unnecessary for -20°C storage

For technical support and original validation data for this product please contact:

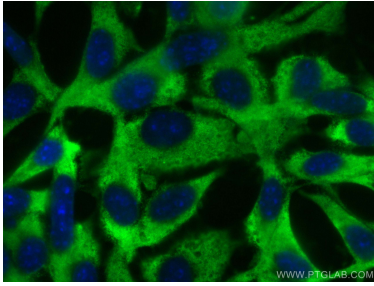
T: 1 (888) 4PTGLAB (1-888-478-4522) (toll free in USA), or 1(312) 455-8498 (outside USA)

E: [proteintech@ptglab.com](mailto:proteintech@ptglab.com)  
W: [ptglab.com](http://ptglab.com)

This product is exclusively available under Proteintech Group brand and is not available to purchase from any other manufacturer.

---

## Selected Validation Data



Immunofluorescent analysis of (-20°C Ethanol)  
fixed NIH/3T3 cells using CoraLite® Plus 488  
RAB10 antibody (CL488-11808) at dilution of 1:200.