

For Research Use Only

CoraLite® Plus 488-conjugated KLF4 Polyclonal antibody



Catalog Number: CL488-11880

Featured Product

Basic Information

Catalog Number: CL488-11880	GenBank Accession Number: BC030811	Purification Method: Antigen affinity purification
Size: 100ul , Concentration: 1000 µg/ml by Nanodrop;	GeneID (NCBI): 9314	Excitation/Emission maxima wavelengths: 493 nm / 522 nm
Source: Rabbit	Full Name: Kruppel-like factor 4 (gut)	
Isotype: IgG	Calculated MW: 504 aa, 54 kDa	
Immunogen Catalog Number: AG2480	Observed MW: 50-60 kDa	

Applications

Tested Applications:
FC (Intra)

Species Specificity:
human, mouse, rat

Background Information

The mammalian Krüppel-like transcription factor 4 (Klf4) is an evolutionarily conserved zinc finger-containing transcription factor with diverse regulatory functions in cell growth, proliferation, differentiation and embryogenesis. It also plays a significant role in the process of tumorigenesis. Klf4 is one of the key transcription factors that have been used to reprogram mouse and human fibroblasts to a pluripotent state also called induced pluripotent stem (iPS) cells. Affinity purified rabbit anti- Klf4 is for the detection of Klf4 transgene expression in the process of reprogramming. There are two isoforms of KLF4 (PMID: 15561714), with MW range from 50 to 60 kDa, and major band is 55 kDa. KLF4 protein can be ubiquitin modified.

Storage

Storage:
Store at -20°C. Avoid exposure to light. Stable for one year after shipment.

Storage Buffer:
PBS with 50% Glycerol, 0.05% Proclin300, 0.5% BSA, pH 7.3.

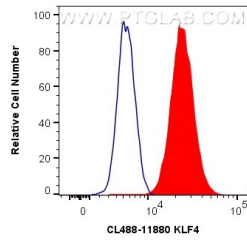
Aliquoting is unnecessary for -20°C storage

*** 20ul sizes contain 0.1% BSA

For technical support and original validation data for this product please contact:
T: 1 (888) 4PTGLAB (1-888-478-4522) (toll free in USA), or 1(312) 455-8498 (outside USA) E: proteintech@ptglab.com
W: ptglab.com

This product is exclusively available under Proteintech Group brand and is not available to purchase from any other manufacturer.

Selected Validation Data



1X10⁶ HeLa cells were intracellularly stained with 0.8 ug CoraLite® Plus 488 Anti-Human KLF4 (CL488-11880) (red), or 0.8 ug Isotype Control. Cells were fixed and permeabilized with Transcription Factor Staining Buffer Kit (PF00011).