

For Research Use Only

# CoraLite® Plus 488-conjugated HuR/ELAVL1 Polyclonal antibody

Catalog Number: CL488-11910

Featured Product



## Basic Information

### Catalog Number:

CL488-11910

### Size:

100ul , Concentration: 1000 ug/ml by 1994  
Nanodrop;

### Source:

Rabbit

### Isotype:

IgG

### Immunogen Catalog Number:

AG2249

### GenBank Accession Number:

BC003376

### GeneID (NCBI):

1994

### UNIPROT ID:

Q15717

### Full Name:

ELAV (embryonic lethal, abnormal  
vision, Drosophila)-like 1 (Hu antigen  
R)

### Calculated MW:

326 aa, 36 kDa

### Observed MW:

30-37 kDa

### Purification Method:

Antigen affinity purification

### Recommended Dilutions:

IF/ICC 1:50-1:500

### Excitation/Emission maxima wavelengths:

493 nm / 522 nm

## Applications

### Tested Applications:

IF/ICC, FC (Intra)

### Species Specificity:

human, mouse, rat

### Positive Controls:

IF/ICC : HeLa cells, MCF-7 cells

## Background Information

ELAVL1, also named as HUR, belongs to the RRM elav family. It is involved in 3'-UTR ARE-mediated MYC stabilization. ELAVL1 binds avidly to the AU-rich element in FOS and IL3/interleukin-3 mRNAs. In the case of the FOS AU-rich element, ELAVL1 binds to a core element of 27 nucleotides that contain AUUUA, AUUUUA and AUUUUUA motifs.

## Storage

### Storage:

Store at -20°C. Avoid exposure to light. Stable for one year after shipment.

### Storage Buffer:

PBS with 50% Glycerol, 0.05% Proclin300, 0.5% BSA, pH 7.3.

Aliquoting is unnecessary for -20°C storage

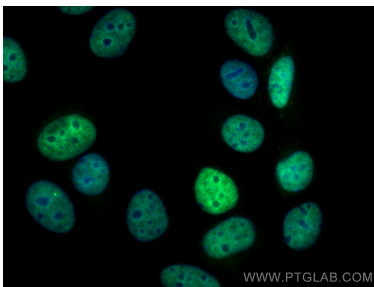
For technical support and original validation data for this product please contact:

T: 1 (888) 4PTGLAB (1-888-478-4522) (toll free  
in USA), or 1(312) 455-8498 (outside USA)

E: [proteintech@ptglab.com](mailto:proteintech@ptglab.com)  
W: [ptglab.com](http://ptglab.com)

This product is exclusively available under Proteintech Group brand and is not available to purchase from any other manufacturer.

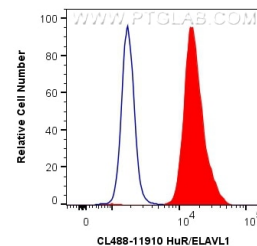
## Selected Validation Data



Immunofluorescent analysis of (4% PFA) fixed MCF-7 cells using CoraLite® Plus 488 HuR/ELAVL1 antibody (CL488-11910) at dilution of 1:200.



Immunofluorescent analysis of (4% PFA) fixed HeLa cells using CoraLite® Plus 488 HuR antibody (CL488-11910) at dilution of 1:200.



1X10<sup>6</sup> MCF-7 cells were intracellularly stained with 0.8 ug CoraLite® Plus 488 Anti-Human HuR/ELAVL1 (CL488-11910) (red), or 0.8 ug Isotype Control. Cells were fixed and permeabilized with Transcription Factor Staining Buffer Kit (PF00011).