

For Research Use Only

# CoraLite® Plus 488-conjugated RABL3 Polyclonal antibody



Catalog Number: CL488-11916

Featured Product

## Basic Information

Catalog Number:

CL488-11916

Size:

100ul, Concentration: 1000 µg/ml by  
Nanodrop;

Source:

Rabbit

Isotype:

IgG

Immunogen Catalog Number:

AG2531

GenBank Accession Number:

BC020832

GeneID (NCBI):

285282

UNIPROT ID:

Q5HYI8

Full Name:

RAB, member of RAS oncogene  
family-like 3

Calculated MW:

236 aa, 26 kDa

Observed MW:

26 kDa

Purification Method:

Antigen affinity purification

Recommended Dilutions:

IF 1:50-1:500

Excitation/Emission maxima  
wavelengths:

493 nm / 522 nm

## Applications

Tested Applications:

FC (Intra), IF

Species Specificity:

human, mouse

Positive Controls:

IF : A549 cells,

## Background Information

The gene of Rabl3 is located on 3q13.3 and is composed of eight exons and seven introns. It is a member of the Rab subfamily, the largest group in the Ras superfamily of small guanosine triphosphatases (GTPases).

## Storage

Storage:

Store at -20°C. Avoid exposure to light. Stable for one year after shipment.

Storage Buffer:

PBS with 50% Glycerol, 0.05% Proclin300, 0.5% BSA, pH 7.3.

Aliquoting is unnecessary for -20°C storage

\*\*\* 20ul sizes contain 0.1% BSA

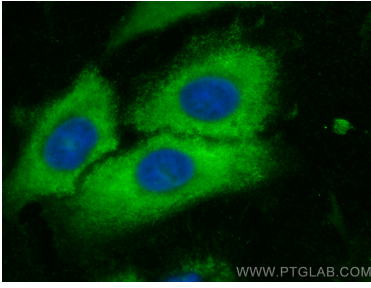
For technical support and original validation data for this product please contact:

T: 1 (888) 4PTGLAB (1-888-478-4522) (toll free  
in USA), or 1(312) 455-8498 (outside USA)

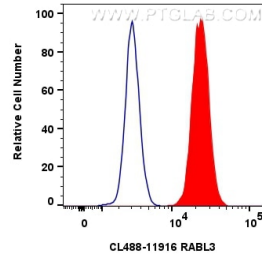
E: [proteintech@ptglab.com](mailto:proteintech@ptglab.com)  
W: [ptglab.com](http://ptglab.com)

This product is exclusively available under Proteintech Group brand and is not available to purchase from any other manufacturer.

## Selected Validation Data



Immunofluorescent analysis of (-20°C Methanol) fixed A549 cells using CoraLite® Plus 488 RABL3 antibody (CL488-11916) at dilution of 1:200.



1x10<sup>6</sup> HEK-293 cells were intracellularly stained with 0.8 ug CoraLite® Plus 488 Anti-Human RABL3 (CL488-11916) (red), or 0.8 ug CoraLite® Plus 488-conjugated Rabbit IgG control Rabbit PolyAb (CL488-30000, Clone: ) (blue). Cells were fixed with 4% PFA and permeabilized with Flow Cytometry Perm Buffer (PF00011-C).