

For Research Use Only

# CoraLite® Plus 488-conjugated COMMD1 Polyclonal antibody



Catalog Number: CL488-11938

Featured Product

## Basic Information

<b>Catalog Number:</b> CL488-11938	<b>GenBank Accession Number:</b> BC022046	<b>Purification Method:</b> Antigen Affinity Purified
<b>Size:</b> 100ul , Concentration: 1000 µg/ml by Nanodrop;	<b>GeneID (NCBI):</b> 150684	<b>Recommended Dilutions:</b> IF 1:50-1:500
<b>Source:</b> Rabbit	<b>Full Name:</b> copper metabolism (Murr1) domain containing 1	<b>Excitation/Emission maxima wavelengths:</b> 488 nm / 515 nm
<b>Isotype:</b> IgG	<b>Calculated MW:</b> 190 aa, 21 kDa	
<b>Immunogen Catalog Number:</b> AG2535	<b>Observed MW:</b> 21 kDa	

## Applications

<b>Tested Applications:</b> FC (Intra), IF	<b>Positive Controls:</b> IF : HepG2 cells,
<b>Species Specificity:</b> human, mouse, rat	

## Background Information

COMMD1 (COMM domain-containing protein 1), also named MURR1, is implicated in copper homeostasis by binding one copper ion per monomer. COMMD1 was reported to accelerate the ubiquitination and degradation of NF-kappa-B subunits, its deficiency exerts enhanced NF-kappa-B mediated cellular response. Ubiquitinated by XIAP (X-linked inhibitor of apoptosis), COMMD1 undergoes proteasomal degradation. SOD1 activity can be downregulated by COMMD1.

## Storage

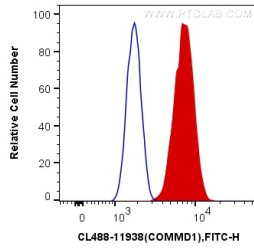
**Storage:**  
Store at -20°C. Avoid exposure to light. Stable for one year after shipment.  
**Storage Buffer:**  
PBS with 50% Glycerol, 0.05% Proclin300, 0.5% BSA, pH 7.3.  
Aliquoting is unnecessary for -20°C storage

\*\*\* 20ul sizes contain 0.1% BSA

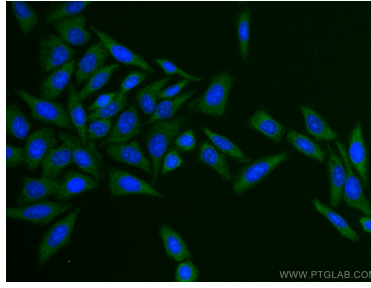
For technical support and original validation data for this product please contact:  
T: 1 (888) 4PTGLAB (1-888-478-4522) (toll free in USA), or 1(312) 455-8498 (outside USA)  
E: proteintech@ptglab.com  
W: ptglab.com

This product is exclusively available under Proteintech Group brand and is not available to purchase from any other manufacturer.

## Selected Validation Data



1X10<sup>6</sup> HepG2 cells were intracellularly stained with 0.4 ug CoraLite® Plus 488 Anti-Human COMMD1 (CL488-11938) (red), or 0.4 ug Control Antibody. Cells were fixed with 4% PFA and permeabilized with Flow Cytometry Perm Buffer (PF00011-C).



Immunofluorescent analysis of (-20°C Ethanol) fixed HepG2 cells using CoraLite® Plus 488 COMMD1 antibody (CL488-11938) at dilution of 1:200.