

For Research Use Only

CoraLite® Plus 488-conjugated EMG1 Polyclonal antibody

Catalog Number: CL488-11965

Featured Product



Basic Information

Catalog Number:

CL488-11965

Size:

100ul, Concentration: 1000 ug/ml by Nanodrop;

Source:

Rabbit

Isotype:

IgG

Immunogen Catalog Number:

AG2575

GenBank Accession Number:

BC055314

GeneID (NCBI):

10436

UNIPROT ID:

Q92979

Full Name:

EMG1 nucleolar protein homolog (S. cerevisiae)

Calculated MW:

244 aa, 27 kDa

Observed MW:

27 kDa

Purification Method:

Antigen affinity purification

Recommended Dilutions:

IF/ICC 1:50-1:500

Excitation/Emission maxima wavelengths:

493 nm / 522 nm

Applications

Tested Applications:

IF/ICC, FC (Intra)

Species Specificity:

human, mouse, rat

Positive Controls:

IF/ICC : HeLa cells,

Background Information

EMG1, also named as NEP1, is a highly conserved protein initially identified as "Essential for Mitotic Growth" in yeast. EMG1 is required for maturation of the 18S rRNA and biogenesis of the 40S ribosomal subunit. EMG1 is the methyltransferase in the biosynthesis of m1acp3-Psi in eukaryotic 18S rRNAs. It has an essential role in 40S ribosomal subunit biogenesis independent on its methyltransferase activity. A mutation in human EMG1 gene causes Bowen-Conradi syndrome (BCS), an autosomal recessive disorder characterized by severely impaired prenatal and postnatal growth, profound psychomotor retardation, and death in early childhood.

Storage

Storage:

Store at -20°C. Avoid exposure to light. Stable for one year after shipment.

Storage Buffer:

PBS with 50% Glycerol, 0.05% Proclin300, 0.5% BSA, pH 7.3.

Aliquoting is unnecessary for -20°C storage

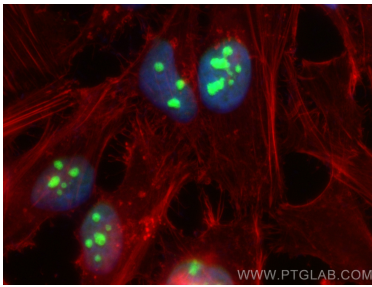
For technical support and original validation data for this product please contact:

T: 1 (888) 4PTGLAB (1-888-478-4522) (toll free in USA), or 1(312) 455-8498 (outside USA)

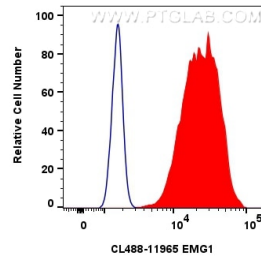
E: proteintech@ptglab.com
W: ptglab.com

This product is exclusively available under Proteintech Group brand and is not available to purchase from any other manufacturer.

Selected Validation Data



Immunofluorescent analysis of (4% PFA) fixed HeLa cells using Coralite® Plus 488 EMG1 antibody (CL488-11965) at dilution of 1:200, CL594-Phalloidin (red).



1×10^6 HeLa cells were intracellularly stained with 0.8 μ g Coralite® Plus 488-conjugated EMG1 Polyclonal antibody (CL488-11965) (red), or 0.8 μ g Coralite® Plus 488-conjugated Rabbit IgG control Rabbit PolyAb (CL488-30000) (blue). Cells were fixed with 4% PFA and permeabilized with Flow Cytometry Perm Buffer (PF00011-C).