

For Research Use Only

# CoraLite® Plus 488-conjugated ODF2 Polyclonal antibody

Catalog Number: CL488-12058

Featured Product



## Basic Information

Catalog Number:

CL488-12058

Size:

100ul , Concentration: 1000 ug/ml by Nanodrop;

Source:

Rabbit

Isotype:

IgG

Immunogen Catalog Number:

AG2693

GenBank Accession Number:

BC010629

GeneID (NCBI):

4957

UNIPROT ID:

Q5BJF6

Full Name:

outer dense fiber of sperm tails 2

Calculated MW:

763 aa, 89 kDa

Observed MW:

67-100 kDa

Purification Method:

Antigen affinity purification

Recommended Dilutions:

WB 1:500-1:1000

Excitation/Emission maxima wavelengths:

493 nm / 522 nm

## Applications

Tested Applications:

WB

Species Specificity:

human, mouse, rat

Positive Controls:

WB : mouse testis tissue,

## Background Information

ODF2 (outer dense fiber 2) is the major cenexin protein of the cytoskeleton of the sperm tail. In somatic cells, it is a component of the centrosome in which it is located in the appendages of the mother centriole. The gene for the cenexin protein, which was first identified as a protein marker of the mother centriole, was subsequently found to be identical to ODF2 and encodes transcripts cenexin 1 and cenexin 2. ODF2 is ubiquitously expressed in many cell types as various splicing variants. Additionally, ODF2 localizes to centrioles, basal bodies, and primary cilia, which are all structurally and functionally interconnected. ODF2 has 10 isoforms with MW 67-100 kDa.

## Storage

Storage:

Store at -20°C. Avoid exposure to light. Stable for one year after shipment.

Storage Buffer:

PBS with 50% Glycerol, 0.05% Proclin300, 0.5% BSA, pH 7.3.

Aliquoting is unnecessary for -20°C storage

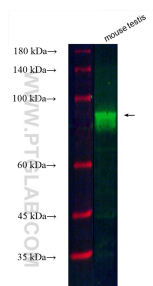
For technical support and original validation data for this product please contact:

T: 1 (888) 4PTGLAB (1-888-478-4522) (toll free in USA), or 1(312) 455-8498 (outside USA)

E: [proteintech@ptglab.com](mailto:proteintech@ptglab.com)  
W: [ptglab.com](http://ptglab.com)

This product is exclusively available under Proteintech Group brand and is not available to purchase from any other manufacturer.

## Selected Validation Data



Various lysates were subjected to SDS PAGE followed by western blot with CL488-12058 (ODF2 antibody) at dilution of 1:500 incubated at room temperature for 1.5 hours.