

For Research Use Only

CoraLite® Plus 488-conjugated Clusterin Polyclonal antibody



Catalog Number: CL488-12289

Basic Information

Catalog Number: CL488-12289	GenBank Accession Number: BC010514	Purification Method: Antigen affinity purification
Size: 100ul , Concentration: 1000 µg/ml by Nanodrop;	GeneID (NCBI): 1191	Recommended Dilutions: IF 1:50-1:500
Source: Rabbit	Full Name: clusterin	Excitation/Emission maxima wavelengths: 493 nm / 522 nm
Isotype: IgG	Calculated MW: 449 aa, 53 kDa	
Immunogen Catalog Number: AG2889	Observed MW: 37 kDa	

Applications

Tested Applications: IF	Positive Controls: IF : HeLa cells, human liver tissue
Species Specificity: human	

Background Information

Clusterin (Apolipoprotein J) is a 75-80 kDa heterodimeric glycoprotein produced by a wide array of tissues and found in most biological fluids (PMID: 7648419; 11906815). It is encoded by one single gene and cleaved posttranslationally into α (34-36 kDa) and β (36-39 kDa) subunits prior to secretion from the cell. Many functions have been described for clusterin, including regulating apoptosis, transporting lipids, controlling cell interactions, regulating complement (PMID: 10694874).

Storage

Storage:
Store at -20°C. Avoid exposure to light. Stable for one year after shipment.
Storage Buffer:
PBS with 50% Glycerol, 0.05% Proclin300, 0.5% BSA, pH 7.3.
Aliquoting is unnecessary for -20°C storage

*** 20ul sizes contain 0.1% BSA

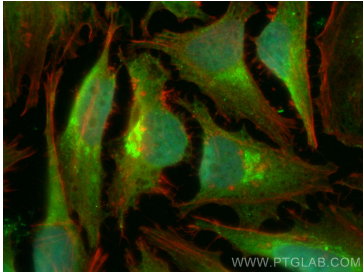
For technical support and original validation data for this product please contact:

T: 1 (888) 4PTGLAB (1-888-478-4522) (toll free in USA), or 1(312) 455-8498 (outside USA)

E: proteintech@ptglab.com
W: ptglab.com

This product is exclusively available under Proteintech Group brand and is not available to purchase from any other manufacturer.

Selected Validation Data



Immunofluorescent analysis of (4% PFA) fixed HeLa cells using CoralLite® Plus 488 Clusterin antibody (CL488-12289) at dilution of 1:100, CL594-phalloidin (red).